

STEAP4 antibody

Catalog Number: 115706

Product name

STEAP4 antibody

IP: 1:500-1:5000

IHC: 1:20-1:200

Specificity

Human, Mouse, Rat; other species not tested.

Antibody description

STEAP4 Rabbit Polyclonal antibody. Positive IHC detected in human prostate cancer tissue. Positive IP detected in A549 cells. Positive WB detected in 3T3-L1 cells, human brain tissue, human liver tissue, rat liver tissue. Observed molecular weight by Western-blot: 52-55 kDa

Preparation

This antibody was obtained by immunization of STEAP4 recombinant protein (Accession Number: NM_001205316). Purification method: Antigen affinity purified.

Formulation

PBS with 0.1% sodium azide and 50% glycerol pH 7.3.

Storage

Store at -20°C. DO NOT ALIQUOT

Clonality

Polyclonal

Ig Type

Rabbit IgG

Applications

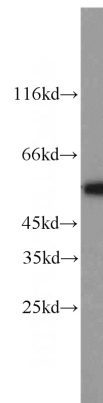
ELISA, WB, IHC, IP

Dilutions

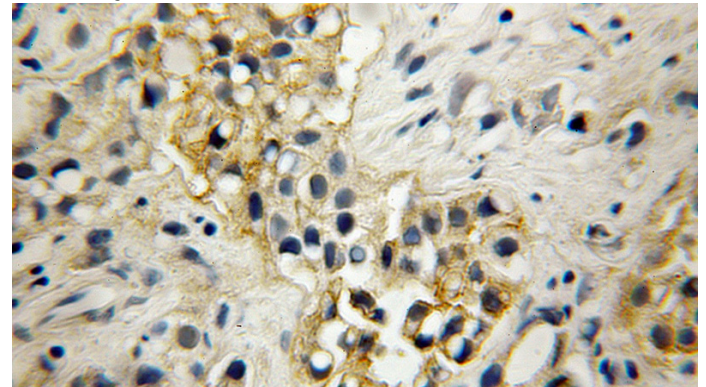
Recommended Dilution:

WB: 1:500-1:5000

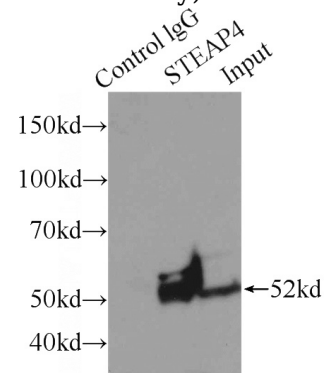
Validations



3T3-L1 cells were subjected to SDS PAGE followed by western blot with Catalog No:115706(STEAP4 antibody) at dilution of 1:1000



Immunohistochemical of paraffin-embedded human prostate cancer using Catalog No:115706(STEAP4 antibody) at dilution of 1:50



(under 10x lens)

IP

IP Result of anti-STEAP4 (IP:Catalog No:115706, 4ug; Detection:Catalog No:115706 1:1000) with

STEAP4 antibody



Catalog Number: 115706

A549 cells lysate 1600ug.