

# HTATSF1 antibody



Catalog Number: 111706

## Product name

HTATSF1 antibody

WB: 1:1000-1:10000

IP: 1:1000-1:10000

## Specificity

Human, Mouse, Rat; other species not tested.

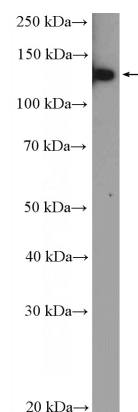
IHC: 1:20-1:200

IF: 1:10-1:100

## Antibody description

HTATSF1 Rabbit Polyclonal antibody. Positive WB detected in HeLa cells, HepG2 cells, Jurkat cells, mouse brain tissue, rat brain tissue. Positive IP detected in HepG2 cells. Positive IHC detected in human breast cancer tissue, human brain tissue. Positive IF detected in HeLa cells. Observed molecular weight by Western-blot: 130-140 kDa

## Validations



HeLa cells were subjected to SDS PAGE followed by western blot with Catalog No:111706(HTATSF1 Antibody) at dilution of 1:2000

## Preparation

This antibody was obtained by immunization of HTATSF1 recombinant protein (Accession Number: NM\_001163280). Purification method: Antigen affinity purified.

## Formulation

PBS with 0.02% sodium azide and 50% glycerol pH 7.3.

## Storage

Store at -20°C. DO NOT ALIQUOT

## Clonality

Polyclonal

## Ig Type

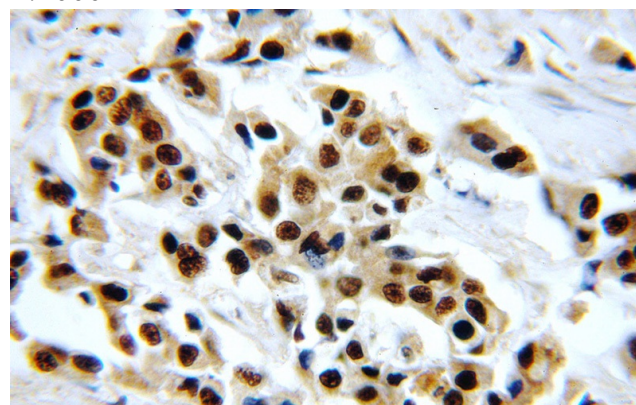
Rabbit IgG

## Applications

ELISA, IHC, IF, WB, IP

## Dilutions

Recommended Dilution:

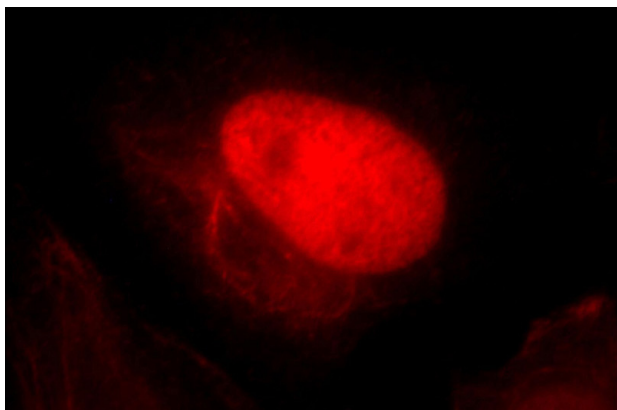


Immunohistochemical of paraffin-embedded human breast cancer using Catalog No:111706(HTATSF1 antibody) at dilution of 1:100 (under 40x lens)

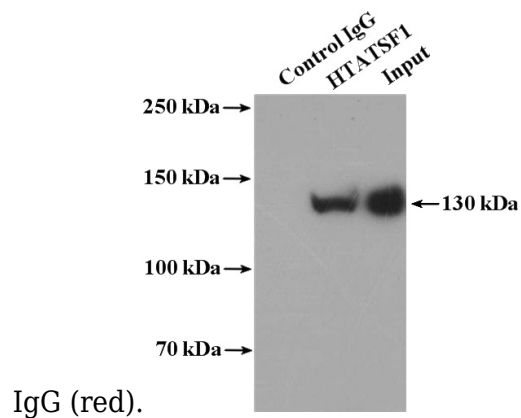
# HTATSF1 antibody

Catalog Number: 111706

---



Immunofluorescent analysis of HeLa cells, using HTATSF1 antibody Catalog No:111706 at 1:25 dilution and Rhodamine-labeled goat anti-rabbit



IP Result of anti-HTATSF1 (IP:Catalog No:111706, 4ug; Detection:Catalog No:111706 1:2000) with HepG2 cells lysate 2400ug.