

Anti-STIP1 Rabbit antibody



Catalog Number: 167306

Product name

Anti-STIP1 Rabbit antibody

WB: 1/2000-1/10000

IHC: 1/20

Specificity

Human, Mouse, Rat

FC: 1/50

IP: 1/20

Antibody description

STIP1 Rabbit polyclonal antibody

Preparation

Antigen: A synthetic peptide of human STIP1

Formulation

Supplied in 50nM Tris-Glycine(pH 7.4), 0.15M NaCl, 40%Glycerol, 0.01% sodium azide and 0.05% BSA.

Storage

Store at -20°C. Stable for 12 months from date of receipt.

Clonality

Polyclonal

Ig Type

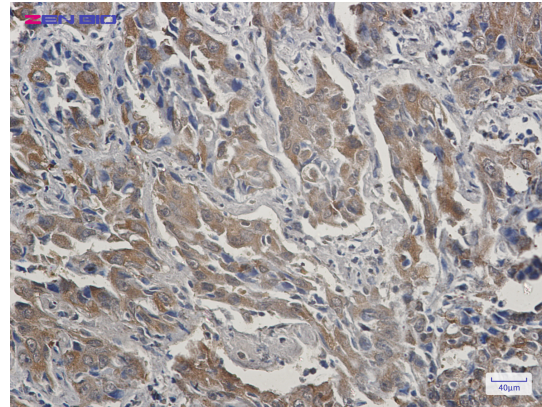
Rabbit IgG

Applications

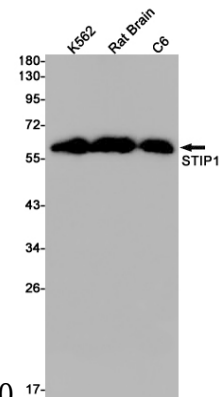
WB, IHC-P, FC, IP

Dilutions

Validations



Immunohistochemistry of STIP1 in paraffin-embedded Human lung cancer tissue using STIP1



Rabbit pAb at dilution 1/20

Western blot detection of STIP1 in K562,Rat Brain,C6 cell lysates using STIP1 Rabbit pAb(1:1000 diluted).Predicted band size:63kDa.Observed band size:63kDa.