

SLC17A5 antibody



Catalog Number: 115306

Product name

SLC17A5 antibody

Specificity

human, mouse, rat; other species not tested.

Antibody description

SLC17A5 Rabbit Polyclonal antibody. Positive WB detected in human kidney tissue, HEK-293 cells, COLO 320 cells. Observed molecular weight by Western-blot: 31kd

Preparation

This antibody was obtained by immunization of SLC17A5 recombinant protein (Accession Number: NM_012434). Purification method: Antigen affinity purified.

Formulation

PBS with 0.02% sodium azide and 50% glycerol pH 7.3.

Storage

Store at -20°C. DO NOT ALIQUOT

Clonality

Polyclonal

Ig Type

Rabbit IgG

Applications

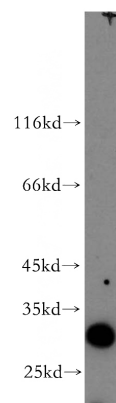
ELISA, WB

Dilutions

Recommended Dilution:

WB: 1:500-1:5000

Validations



human kidney tissue were subjected to SDS PAGE followed by western blot with Catalog No:115306(SLC17A5 antibody) at dilution of 1:300