

Anti-CCDC63 antibody

Catalog Number: 175306

Product name

Anti-CCDC63 antibody

Specificity

Human, Mouse, Rat

Antibody description

Rabbit polyclonal antibody to CCDC63

Preparation

This antigen of this antibody was klh conjugated synthetic peptide derived from human ccdc63 251-350/563

Formulation

Liquid, 0.01M TBS(pH7.4) with 1% BSA, 0.03% Proclin300 and 50% Glycerol.

Storage

Store at -20°C for one year. Avoid repeated freeze/thaw cycles. The lyophilized antibody is stable at room temperature for at least one month and for greater than a year when kept at -20°C. When reconstituted in sterile pH 7.4 0.01M PBS or diluent of antibody the antibody is stable for at least two weeks at 2-4°C.

Clonality

Polyclonal

Ig Type

Rabbit IgG

Applications

WB, IHC-P

Dilutions

WB:1:500-2000

IHC-P:1:400-800

Validations

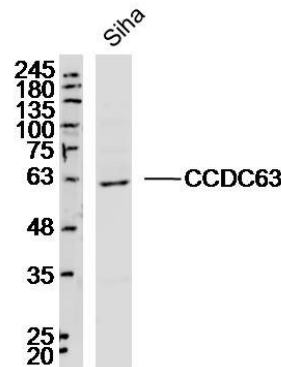


Fig1: Sample:Siha (Human)Cell Lysate at 40 ug; Primary: Anti-CCDC63 at 1/300 dilution; Secondary: IRDye800CW Goat Anti-RabbitIgG at 1/20000 dilution; Predicted band size: 66kD; Observed band size: 63kD

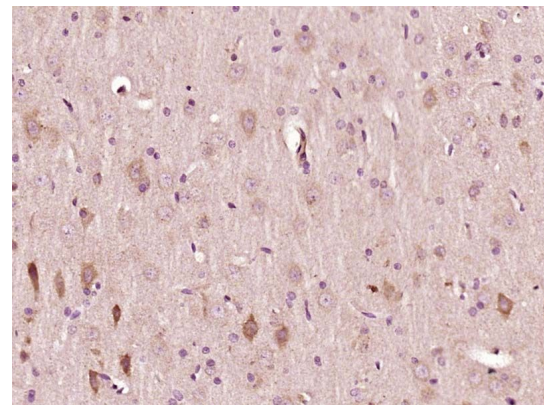


Fig2: Paraformaldehyde-fixed, paraffin embedded (Rat brain); Antigen retrieval by boiling in sodium citrate buffer (pH6.0) for 15min; Block endogenous peroxidase by 3% hydrogen peroxide for 20 minutes; Blocking buffer (normal goat serum) at 37°C for 30min; Antibody incubation with (CCDC63) Polyclonal Antibody, Unconjugated at 1:500 overnight at 4°C, followed by a conjugated secondary (sp-0023) for 20 minutes

Anti-CCDC63 antibody



Catalog Number: 175306

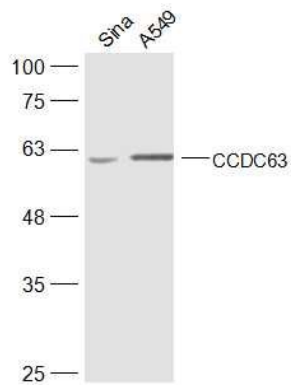


Fig3: Sample:; SiHa(Human) Cell Lysate at 40 ug; A549(Human) Cell Lysate at 40 ug; Primary: Anti-CCDC63 at 1/300 dilution; Secondary: IRDye800CW Goat Anti-Rabbit IgG at 1/20000 dilution; Predicted band size: 66/61 kD; Observed band size: 61 kD

and DAB staining.