

Mouse CLEC4F / CLECSF13 (Fc Tag) recombinant protein



Catalog Number: 500306

General Information

Gene Name Synonym

C-type lectin superfamily member 13; Kupffer cell receptor

Protein Construction

A DNA sequence encoding the mouse Clec4f (NP_058031.2) (Arg70-Gly548) was expressed with the Fc region of human IgG1 at the N-terminus.

Organism

Mouse

Expression Host

Human Cells

QC Testing

Purity

> 85 % as determined by SDS-PAGE.

Endotoxin

<1.0 EU per μg protein as determined by the LAL method.

Stability

Samples are stable for up to twelve months from date of receipt at -70°C

Predicted N terminal

Glu

Molecular Mass

The recombinant mouse Clec4f consists 739 amino acids and predicts a molecular mass of 82.1 kDa.

Formulation

Lyophilized from sterile PBS, pH 7.4.

1. 5 % trehalose and mannitol are added as protectants before lyophilization.

2. Please contact us for any concerns or special requirements.

Usage Guide

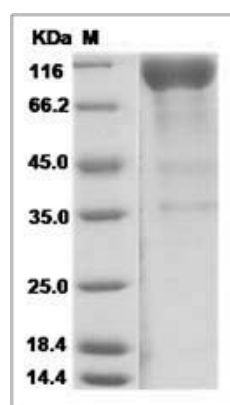
Storage

Store it under sterile conditions at -20°C to -80°C . It is recommended that the protein be aliquoted for optimal storage. Avoid repeated freeze-thaw cycles.

Reconstitution

Adding sterile water, prepare a stock solution of 0.25 mg/ml. Concentration is measured by UV-Vis.

SDS-PAGE



Clec4f protein SDS-PAGE