

# CSPP1 antibody



Catalog Number: 109606

## Product name

CSPP1 antibody

## Specificity

Human, Mouse, Rat; other species not tested.

## Antibody description

CSPP1 Rabbit Polyclonal antibody. Positive WB detected in Jurkat cells, HEK-293 cells, HeLa cells, mouse testis tissue, rat testis tissue. Positive IF detected in Hela cells. Observed molecular weight by Western-blot: 141kd

## Preparation

This antibody was obtained by immunization of CSPP1 recombinant protein (Accession Number: BC029445). Purification method: Antigen affinity purified.

## Formulation

PBS with 0.1% sodium azide and 50% glycerol pH 7.3.

## Storage

Store at -20°C. DO NOT ALIQUOT

## Clonality

Polyclonal

## Ig Type

Rabbit IgG

## Applications

ELISA, WB, IF

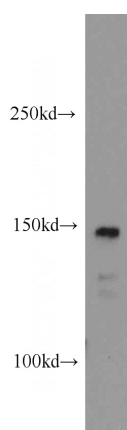
## Dilutions

Recommended Dilution:

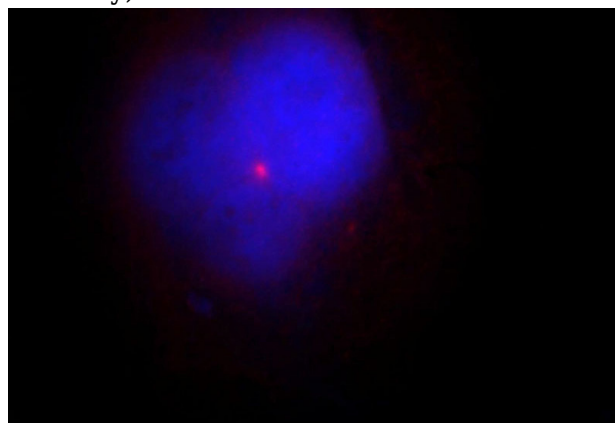
WB: 1:200-1:2000

IF: 1:10-1:100

## Validations



Jurkat cells were subjected to SDS PAGE followed by western blot with Catalog No:109606(CSPP1 antibody) at dilution of 1:200



Immunofluorescent analysis of HeLa cells, using CSPP1 antibody Catalog No:109606 at 1:25 dilution and Rhodamine-labeled goat anti-rabbit IgG (red). Blue pseudocolor = DAPI (fluorescent DNA dye).