

Human PD1/PDCD1/CD279 (His Tag) recombinant protein



Catalog Number: 503606

General Information

Protein Construction

A DNA sequence encoding the extracellular domain (Met 1-Gln 167) of human PD1 (NP_005009.2) was expressed with a C-terminal polyhistidine tag.

Organism

Human

Expression Host

Human Cells

QC Testing

Activity

Measured by its binding ability in a functional ELISA. Immobilized human PD-1 at 10 µg/ml (100 µl/well) can bind recombinant human B7-H1 / PD-L1 / Fc chimera with a linear range of 0.02-0.4 µg/ml.

Purity

> 95 % as determined by SDS-PAGE

Endotoxin

< 1.0 EU per µg of the protein as determined by the LAL method

Stability

Samples are stable for up to twelve months from date of receipt at -70°C

Predicted N terminal

Leu 25

Molecular Mass

The recombinant mature human PD1 consists of 154 amino acids and has a calculated molecular mass of 17.4 kDa.

Formulation

Lyophilized from sterile PBS, pH 7.4

1. 5 % trehalose and mannitol are added as protectants before lyophilization.
2. Please contact us for any concerns or special requirements.

Usage Guide

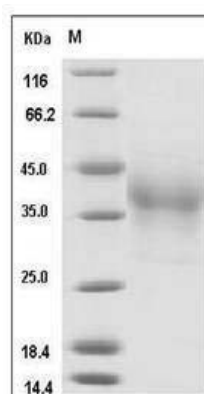
Storage

Store it under sterile conditions at -20°C to -80°C. It is recommended that the protein be aliquoted for optimal storage. Avoid repeated freeze-thaw cycles.

Reconstitution

Adding sterile water, prepare a stock solution of 0.25 mg/ml. Concentration is measured by UV-Vis.

SDS-PAGE



Human PD1 / PDCD1 Protein (His Tag) SDS-PAGE