

# TPM3 antibody

Catalog Number: 116206

## Product name

TPM3 antibody

## Specificity

Human, Mouse, Rat; other species not tested.

## Antibody description

TPM3 Rabbit Polyclonal antibody. Positive WB detected in mouse skeletal muscle tissue, HEK-293 cells, HeLa cells, human heart tissue, mouse heart tissue, rat heart tissue. Positive IP detected in HeLa cells. Positive IHC detected in human ovary tumor, human colon cancer, human liver cancer, human ovary. Observed molecular weight by Western-blot: 38-40kd

## Preparation

This antibody was obtained by immunization of TPM3 recombinant protein (Accession Number: NM\_152263). Purification method: Antigen affinity purified.

## Formulation

PBS with 0.1% sodium azide and 50% glycerol pH 7.3.

## Storage

Store at -20°C. DO NOT ALIQUOT

## Clonality

Polyclonal

## Ig Type

Rabbit IgG

## Applications

ELISA, WB, IHC, IP

## Dilutions

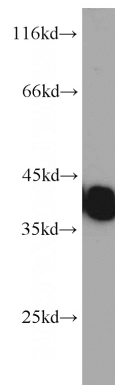
Recommended Dilution:

WB: 1:500-1:5000

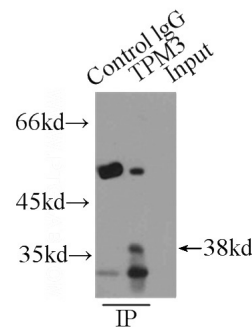
IP: 1:200-1:1000

IHC: 1:20-1:200

## Validations



mouse skeletal muscle tissue were subjected to SDS PAGE followed by western blot with Catalog No:116206(TPM3 antibody) at dilution of 1:800

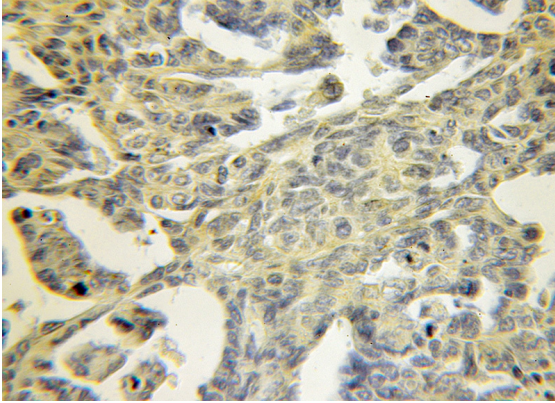


IP Result of anti-TPM3 (IP:Catalog No:116206, 4ug; Detection:Catalog No:116206 1:300) with HeLa cells lysate 2000ug.

# TPM3 antibody

Catalog Number: 116206

---



Immunohistochemical of paraffin-embedded human ovary tumor using Catalog No:116206(TPM3 antibody) at dilution of 1:50 (under 10x lens)