

# EFEMP2 antibody

Catalog Number: 110206

## Product name

EFEMP2 antibody

WB: 1:200-1:2000

IP: 1:200-1:2000

## Specificity

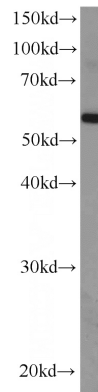
Human, Mouse; other species not tested.

IHC: 1:20-1:200

## Antibody description

EFEMP2 Rabbit Polyclonal antibody. Positive IHC detected in human heart tissue, human prostate cancer tissue, human skin tissue. Positive WB detected in mouse kidney tissue, K-562 cells. Positive IP detected in mouse kidney tissue. Observed molecular weight by Western-blot: 52-55 kDa

## Validations



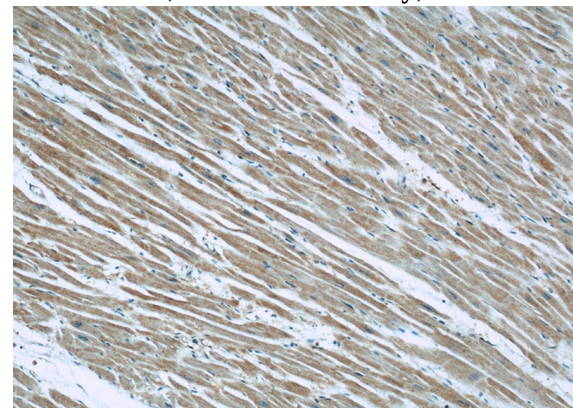
## Preparation

This antibody was obtained by immunization of EFEMP2 recombinant protein (Accession Number: NM\_016938). Purification method: Antigen affinity purified.

mouse kidney tissue were subjected to SDS PAGE followed by western blot with Catalog No:110206(EFEMP2 antibody) at dilution of 1:500

## Formulation

PBS with 0.02% sodium azide and 50% glycerol pH 7.3.



## Storage

Store at -20°C. DO NOT ALIQUOT

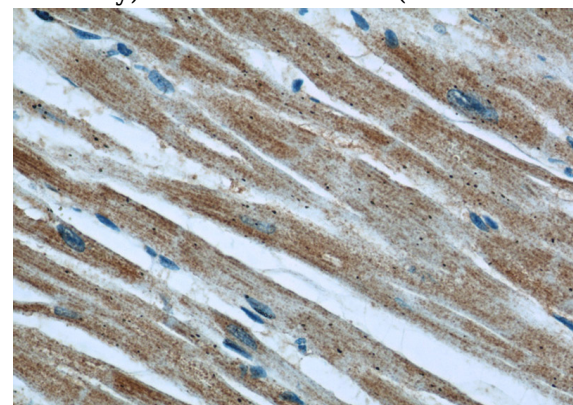
## Clonality

Polyclonal

Immunohistochemical of paraffin-embedded human heart using Catalog No:110206(EFEMP2 antibody) at dilution of 1:50 (under 10x lens)

## Ig Type

Rabbit IgG



## Applications

ELISA, WB, IHC, IP

## Dilutions

Recommended Dilution:

# EFEMP2 antibody

Catalog Number: 110206

---

Immunohistochemical of paraffin-embedded human heart using Catalog No:110206(EFEMP2 antibody) at dilution of 1:50 (under 40x lens)

IP Result of anti-EFEMP2 (IP:Catalog No:110206, 4ug; Detection:Catalog No:110206 1:500) with mouse kidney tissue lysate 4000ug.

