

Anti-FH/Fumarase Rabbit antibody



Catalog Number: 168906

Product name

Rabbit IgG

Anti-FH/Fumarase Rabbit antibody

Applications

Specificity

WB, ICC/IF, FC

Human, Mouse, Rat

Dilutions

Antibody description

WB: 1/1000-1/2000

FH/Fumarase Rabbit monoclonal antibody

ICC/IF: 1/20

Preparation

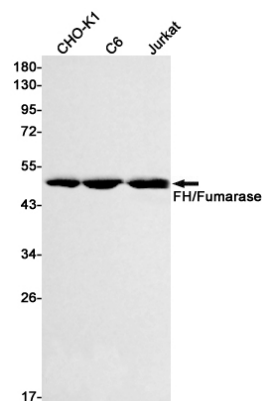
FC: 1/20

Antigen: A synthetic peptide of human FH

Validations

Formulation

50nM Tris-Glycine(pH 7.4), 0.15M NaCl,
40%Glycerol, 0.01% sodium azide and 0.05% BSA.



Storage

Store at 4°C short term. Store at -20°C long term.
Avoid freeze / thaw cycle.

Western blot detection of FH/Fumarase in CHO-K1,C6,Jurkat cell lysates using FH/Fumarase Rabbit mAb(1:500 diluted).Predicted band size:55kDa.Observed band size:49kDa.

Clonality

Monoclonal

Ig Type