

# Human CD6 / Cluster of Differentiation 6 (Fc Tag) recombinant protein



Catalog Number: 504906

## General Information

### Protein Construction

A DNA sequence encoding the human CD6 (NP\_006716.3) (Met1-Glu398) was expressed with the Fc region of human IgG1 at the C-terminus.

### Organism

Human

### Expression Host

Human Cells

## QC Testing

### Activity

Measured by its ability of the immobilized protein to support the adhesion of Jurkat human acute T cell leukemia cells. When  $8 \times 10^4$  cells/well are added to CD6-Fc coated plates (10  $\mu\text{g}/\text{mL}$ , 100  $\mu\text{L}/\text{well}$ ), approximately >70% will adhere after 60 minutes at 37°C.

### Purity

> 95 % as determined by SDS-PAGE.

### Endotoxin

< 1.0 EU per  $\mu\text{g}$  protein as determined by the LAL method.

### Stability

Samples are stable for up to twelve months from date of receipt at -70°C

### Predicted N terminal

His 18

## Molecular Mass

The recombinant human CD6 consists of 619 amino acids and predicts a molecular mass of 67.3 kDa.

## Formulation

Lyophilized from sterile PBS, pH 7.4.

1. 5 % trehalose and mannitol are added as protectants before lyophilization.

2. Please contact us for any concerns or special requirements.

## Usage Guide

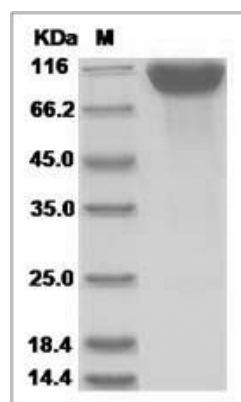
### Storage

Store it under sterile conditions at -20°C to -80°C. It is recommended that the protein be aliquoted for optimal storage. Avoid repeated freeze-thaw cycles.

### Reconstitution

Adding sterile water, prepare a stock solution of 0.25 mg/ml. Concentration is measured by UV-Vis.

### SDS-PAGE



Human CD6 / Cluster of Differentiation 6 Protein (Fc Tag)