

# PRDM14 Polyclonal Antibody



Catalog Number: 164906

## Product name

PRDM14 Polyclonal Antibody

## Specificity

Human, Mouse, Rat

## Antibody description

Polyclonal antibody to PRDM14

## Preparation

Antigen: Recombinant protein of mouse PRDM14

## Formulation

PBS with 0.02% sodium azide, 50% glycerol, pH7.3.

## Storage

Store at -20°C. Avoid freeze / thaw cycles.

## Clonality

Polyclonal

## Ig Type

Rabbit IgG

## Applications

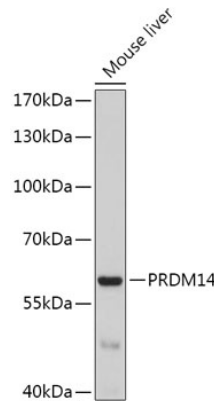
WB, IF

## Dilutions

WB 1:500 - 1:2000

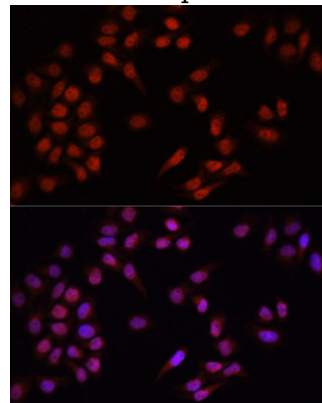
IF 1:50 - 1:200

## Validations



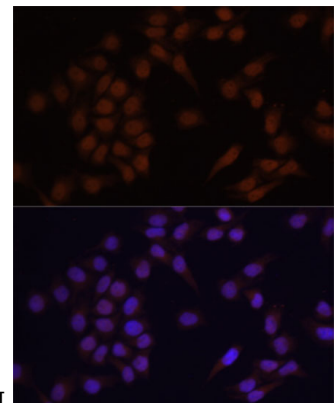
Western blot - PRDM14 Polyclonal Antibody

Western blot analysis of extracts of Mouse liver, using PRDM14 antibody at 1:1000 dilution. Secondary antibody: HRP Goat Anti-Rabbit IgG (H+L) at 1:10000 dilution. Lysates/proteins: 25ug per lane. Blocking buffer: 3% nonfat dry milk in TBST. Detection: ECL Basic Kit. Exposure time: 5min.



Immunofluorescence - PRDM14 Polyclonal Antibody

Immunofluorescence analysis of HeLa cells using PRDM14 antibody at dilution of 1:100. Blue: DAPI



for nuclear staining.

# PRDM14 Polyclonal Antibody

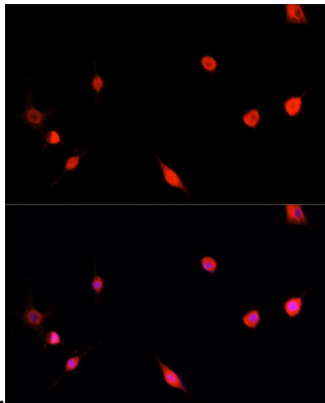


Catalog Number: 164906

---

## Immunofluorescence - PRDM14 Polyclonal Antibody

Immunofluorescence analysis of NIH/3T3 cells using PRDM14 antibody at dilution of 1:100. Blue:



DAPI for nuclear staining.

## Immunofluorescence - PRDM14 Polyclonal Antibody

Immunofluorescence analysis of PC12 cells using PRDM14 antibody at dilution of 1:100. Blue: DAPI for nuclear staining.