

PIM2 antibody

Catalog Number: 113906

Product name

PIM2 antibody

Specificity

Human; other species not tested.

Antibody description

PIM2 Rabbit Polyclonal antibody. Positive IP detected in Raji cells. Observed molecular weight by Western-blot: 34 kDa

Preparation

This antibody was obtained by immunization of PIM2 recombinant protein (Accession Number: NM_006875). Purification method: Antigen affinity purified.

Formulation

PBS with 0.1% sodium azide and 50% glycerol pH 7.3.

Storage

Store at -20°C. DO NOT ALIQUOT

Clonality

Polyclonal

Ig Type

Rabbit IgG

Applications

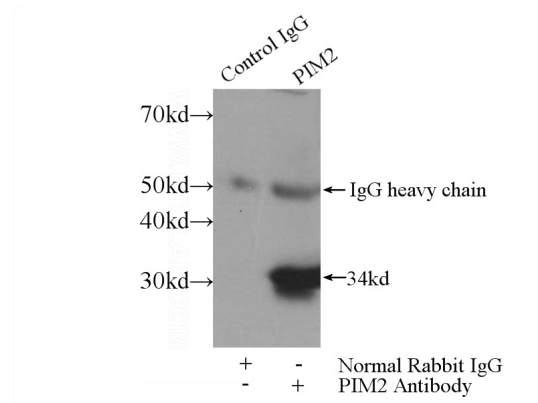
ELISA, IP

Dilutions

Recommended Dilution:

IP: 1:200-1:1000

Validations



IP Result of anti-PIM2 (IP:Catalog No:113906, 4ug; Detection:Catalog No:113906 1:300) with Raji cells lysate 1320ug.