

# Human VE-Cadherin/CD144 (His & Fc Tag) recombinant protein



Catalog Number: 502906

## General Information

### Gene Name Synonym

7B4 antigen; Vascular endothelial cadherin

### Protein Construction

A DNA sequence encoding the extracellular domain of human CDH5 (NP\_001786.2) (Met 1-Gln 593) was fused with the C-terminal polyhistidine-tagged Fc region of human IgG1 at the C-terminus.

### Organism

Human

### Expression Host

Human Cells

## QC Testing

### Activity

Measured by the ability of the immobilized protein to support the adhesion of MCF-7 human breast adenocarcinoma cells. When 5 x 10<sup>4</sup> cells/well are added to Recombinant Human Cadherin-5 coated plates (0.8 µg/mL with 100 µL/well), approximately >50% will adhere after 1 hour at 37°C.

### Purity

> 85 % as determined by SDS-PAGE

### Endotoxin

< 1.0 EU per µg of the protein as determined by the LAL method

### Stability

Samples are stable for up to twelve months from date of receipt at -70°C

### Predicted N terminal

Ala 26

### Molecular Mass

The recombinant human CDH5/Fc is a disulfide-linked homodimeric protein. The reduced monomer consists of 815 amino acids after removal of the signal peptide and has a predicted molecular mass of 92 kDa. In SDS-PAGE under reducing conditions, the apparent molecular mass of rh CDH5/Fc monomer is approximately 120 kDa due to glycosylation.

### Formulation

Lyophilized from sterile PBS, pH 7.4

1. 5 % trehalose and mannitol are added as protectants before lyophilization.

2. Please contact us for any concerns or special requirements.

## Usage Guide

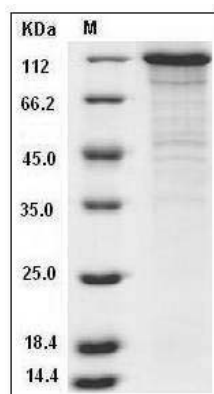
### Storage

Store it under sterile conditions at -20°C to -80°C. It is recommended that the protein be aliquoted for optimal storage. Avoid repeated freeze-thaw cycles.

### Reconstitution

Adding sterile water, prepare a stock solution of 0.25 mg/ml. Concentration is measured by UV-Vis.

### SDS-PAGE



# Human VE-Cadherin/CD144 (His & Fc Tag) recombinant protein



Catalog Number: 502906

---

Human VE-Cadherin / CD144 / CDH5 Protein (His & Fc Tag) SDS-PAGE