

# Osteopontin antibody



Catalog Number: 113506

## Product name

Osteopontin antibody

WB: 1:500-1:5000

IHC: 1:20-1:200

## Specificity

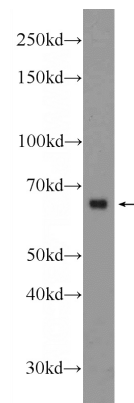
Human, Mouse; other species not tested.

IF: 1:20-1:200

## Antibody description

Osteopontin Rabbit Polyclonal antibody. Positive WB detected in mouse kidney tissue, HEK-293 cells, HepG2 cells, Jurkat cells. Positive IF detected in HepG2 cells. Positive IHC detected in human stomach cancer tissue, human colon cancer tissue. Observed molecular weight by Western-blot: 66 kDa

## Validations



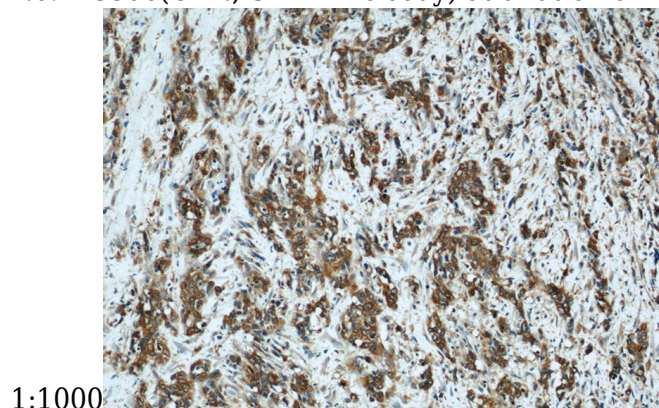
## Preparation

This antibody was obtained by immunization of Osteopontin recombinant protein (Accession Number: NM\_000582). Purification method: Antigen affinity purified.

mouse kidney tissue were subjected to SDS PAGE followed by western blot with Catalog No:113506(OPN, SPP1 Antibody) at dilution of

## Formulation

PBS with 0.02% sodium azide and 50% glycerol pH 7.3.



## Storage

Store at -20°C. DO NOT ALIQUOT

## Clonality

Polyclonal

Immunohistochemical of paraffin-embedded human stomach cancer using Catalog No:113506(OPN, SPP1 antibody) at dilution of 1:50 (under 10x lens)

## Ig Type

Rabbit IgG

Immunohistochemical of paraffin-embedded human stomach cancer using Catalog No:113506(OPN, SPP1 antibody) at dilution of 1:50 (under 40x lens)

## Applications

ELISA, IHC, WB, IF

## Dilutions

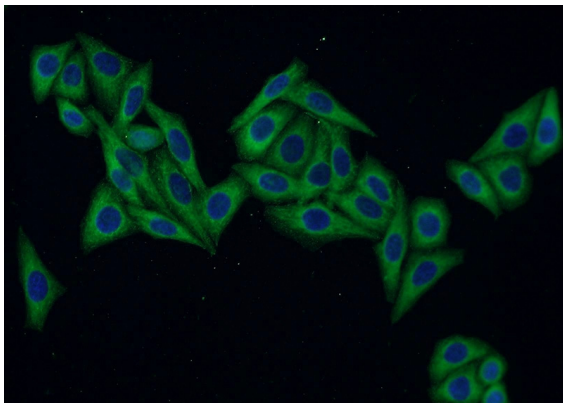
Recommended Dilution:

# Osteopontin antibody



Catalog Number: 113506

---



Immunofluorescent analysis of HepG2 cells using Catalog No:113506(OPN, SPP1 Antibody) at dilution of 1:50 and Alexa Fluor 488-conjugated AffiniPure Goat Anti-Rabbit IgG(H+L)