

# CDC42EP2 antibody



Catalog Number: 109106

## Product name

CDC42EP2 antibody

## Specificity

human, mouse, rat; other species not tested.

## Antibody description

CDC42EP2 Rabbit Polyclonal antibody. Positive WB detected in K-562 cells, mouse pancreas tissue. Observed molecular weight by Western-blot: 22kd

## Preparation

This antibody was obtained by immunization of CDC42EP2 recombinant protein (Accession Number: XM\_017017094). Purification method: Antigen affinity purified.

## Formulation

PBS with 0.1% sodium azide and 50% glycerol pH 7.3.

## Storage

Store at -20°C. DO NOT ALIQUOT

## Clonality

Polyclonal

## Ig Type

Rabbit IgG

## Applications

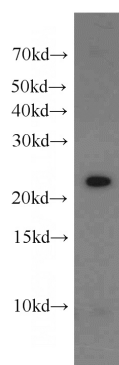
ELISA, WB

## Dilutions

Recommended Dilution:

WB: 1:200-1:2000

## Validations



K-562 cells were subjected to SDS PAGE followed by western blot with Catalog No:109106(CDC42EP2 antibody) at dilution of 1:200