

Anti-GTPase HRAS Rabbit antibody



Catalog Number: 167106

Product name

Anti-GTPase HRAS Rabbit antibody

Specificity

Human, Mouse, Rat

Antibody description

GTPase HRAS Rabbit polyclonal antibody

Preparation

Antigen: The antiserum was produced against synthesized peptide derived from human RASH/RASK. AA range:1-50

Formulation

Liquid in PBS containing 50% glycerol, 0.5% BSA and 0.02% sodium azide.

Storage

Store at 4°C short term. Store at -20°C long term. Avoid freeze / thaw cycle.

Clonality

Polyclonal

Ig Type

Rabbit IgG

Applications

WB, IHC-P, ELISA

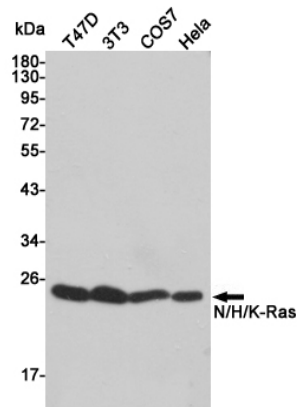
Dilutions

WB: 1/500 - 1/2000

IHC: 1/100 - 1/300

ELISA: 1/20000

Validations



Western blot detection of N/H/K-Ras in T47D,3T3,COS7 and HeLa cell lysates using N/H/K-Ras rabbit pAb (1:1000 diluted).Predicted band size:17kDa.Observed band size:17kDa.