

# SEC23IP Polyclonal Antibody



Catalog Number: 164106

## Product name

SEC23IP Polyclonal Antibody

## Specificity

Human

## Antibody description

Polyclonal antibody to SEC23IP

## Preparation

Antigen: A synthetic peptide of human SEC23IP

## Formulation

PBS with 0.02% sodium azide, pH7.3.

## Storage

Store at 4°C. Avoid freeze / thaw cycles.

## Clonality

Polyclonal

## Ig Type

Rabbit IgG

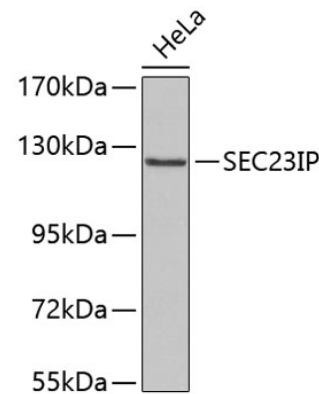
## Applications

WB

## Dilutions

WB 1:500 - 1:2000

## Validations



Western blot - SEC23IP Polyclonal Antibody

Western blot analysis of extracts of HeLa cells, using SEC23IP antibody .Secondary antibody: HRP Goat Anti-Rabbit IgG (H+L) at 1:10000 dilution.Lysates/proteins: 25ug per lane.Blocking buffer: 3% nonfat dry milk in TBST.