

# KLHL35 antibody



Catalog Number: 112106

## Product name

KLHL35 antibody

## Immunogen

[Human KLHL35 Recombinant protein \(His tag\)](#)

## Specificity

Human, Mouse, Rat; other species not tested.

## Antibody description

KLHL35 Rabbit Polyclonal antibody. Positive WB detected in mouse brain tissue, mouse kidney tissue. Positive IHC detected in human heart tissue. Positive IF detected in Hela cells. Observed molecular weight by Western-blot: 40-50 kDa

## Preparation

This antibody was obtained by immunization of KLHL35 recombinant protein (Accession Number: BC042952). Purification method: Antigen affinity purified.

## Formulation

PBS with 0.02% sodium azide and 50% glycerol pH 7.3.

## Storage

Store at -20°C. DO NOT ALIQUOT

## Clonality

Polyclonal

## Ig Type

Rabbit IgG

## Applications

ELISA, WB, IHC, IF

## Dilutions

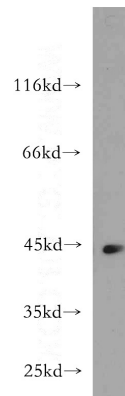
Recommended Dilution:

WB: 1:500-1:5000

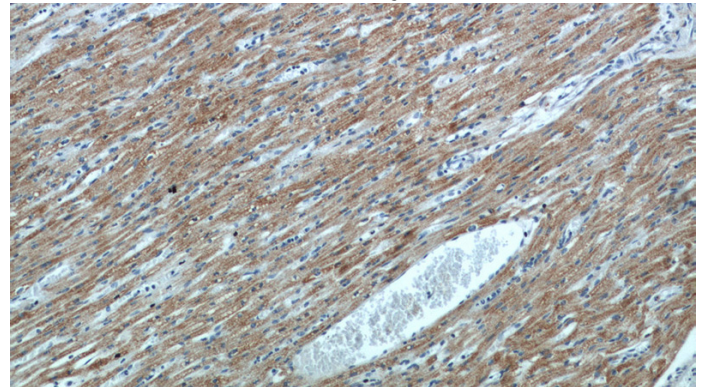
IHC: 1:20-1:200

IF: 1:10-1:100

## Validations



mouse brain tissue were subjected to SDS PAGE followed by western blot with Catalog No:112106(KLHL35 antibody) at dilution of 1:500

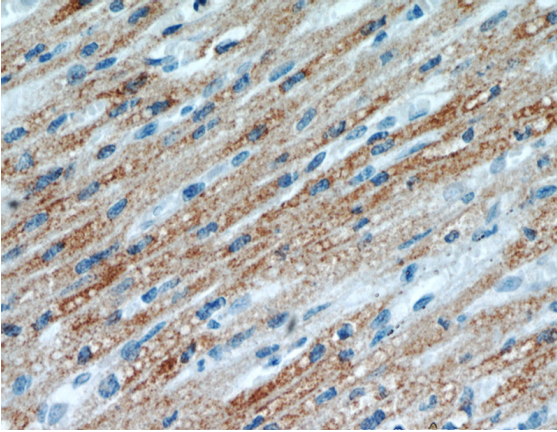


Immunohistochemical of paraffin-embedded human heart using Catalog No:112106(KLHL35 antibody) at dilution of 1:100 (under 10x lens)

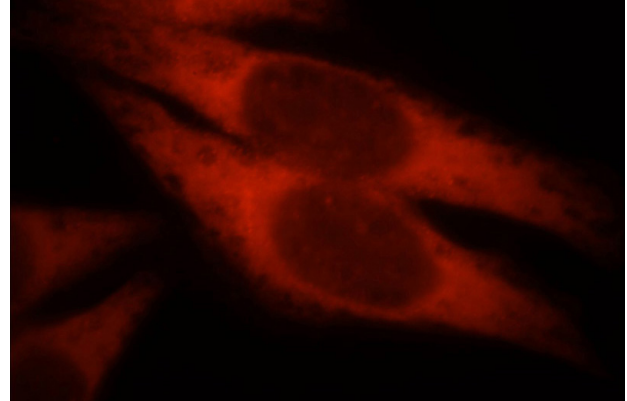
# KLHL35 antibody

Catalog Number: 112106

---



Immunohistochemical of paraffin-embedded human heart using Catalog No:112106(KLHL35 antibody) at dilution of 1:100 (under 40x lens)



Immunofluorescent analysis of HeLa cells, using KLHL35 antibody Catalog No:112106 at 1:25 dilution and Rhodamine-labeled goat anti-rabbit IgG (red).