

Anti-EPS15R Rabbit antibody



Catalog Number: 168806

Product name

Anti-EPS15R Rabbit antibody

Specificity

Human

Antibody description

EPS15R Rabbit monoclonal antibody

Preparation

Antigen: A synthetic peptide of human EPS15R

Formulation

Supplied in 50nM Tris-Glycine(pH 7.4), 0.15M NaCl, 40%Glycerol, 0.01% sodium azide and 0.05% BSA.

Storage

Store at 4°C short term. Aliquot and store at -20°C long term. Avoid freeze / thaw cycle.

Clonality

Monoclonal

Ig Type

Rabbit IgG

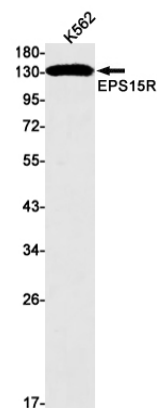
Applications

WB, FC, IP

Dilutions

WB: 1/5000

Validations



Western blot detection of EPS15R in K562 cell lysates using EPS15R Rabbit mAb(1:1000 diluted). Predicted band size:94kDa. Observed band size:130kDa.