

# RPH3A antibody

Catalog Number: 114806

---

**Product name**

RPH3A antibody

**Specificity**

Human, Mouse, Rat; other species not tested.

**Antibody description**

RPH3A Rabbit Polyclonal antibody. Positive IF detected in COLO 320 cells. Positive WB detected in COLO 320 cells, human brain tissue. Observed molecular weight by Western-blot: 76kd

**Preparation**

This antibody was obtained by immunization of RPH3A recombinant protein (Accession Number: NM\_014954). Purification method: Antigen affinity purified.

**Formulation**

PBS with 0.1% sodium azide and 50% glycerol pH 7.3.

**Storage**

Store at -20°C. DO NOT ALIQUOT

**Clonality**

Polyclonal

**Ig Type**

Rabbit IgG

**Applications**

ELISA, WB, IF

**Dilutions**

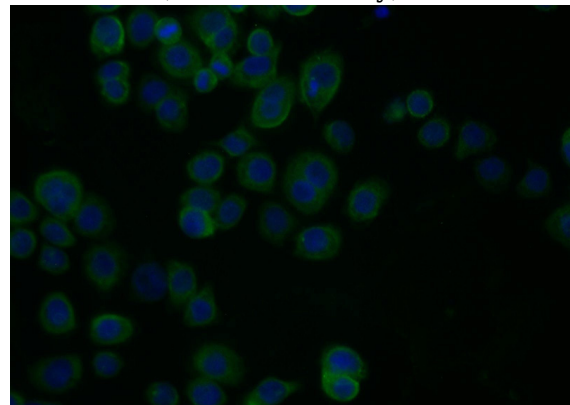
Recommended Dilution:

WB: 1:200-1:2000

IF: 1:10-1:100

**Validations**

COLO 320 cells were subjected to SDS PAGE followed by western blot with Catalog No:114806(RPH3A antibody) at dilution of 1:800



Immunofluorescent analysis of COLO 320 cells using Catalog No:114806(RPH3A Antibody) at dilution of 1:25 and Alexa Fluor 488-conjugated AffiniPure Goat Anti-Rabbit IgG(H+L)