

## General Information

### Gene Name Synonym

CD209 antigen-like protein 1; DC-SIGN-related protein; Dendritic cell-specific ICAM-3-grabbing non-integrin 2; Liver/lymph node-specific ICAM-3-grabbing non-integrin

### Protein Construction

A DNA sequence encoding the human CLEC4M (NP\_055072.3) (Ser78-Glu399) was expressed.

### Organism

Human

### Expression Host

Human Cells

## QC Testing

### Purity

> (50.1+31.8) % as determined by SDS-PAGE.

### Endotoxin

< 1.0 EU per  $\mu\text{g}$  protein as determined by the LAL method.

### Stability

Samples are stable for up to twelve months from date of receipt at  $-70^{\circ}\text{C}$

### Predicted N terminal

Ser 78

## Molecular Mass

The recombinant human CLEC4M consists 322 amino acids and predicts a molecular mass of 37 kDa.

### Formulation

Lyophilized from sterile PBS, pH 7.4.

1. 5 % trehalose and mannitol are added as protectants before lyophilization.

2. Please contact us for any concerns or special requirements.

## Usage Guide

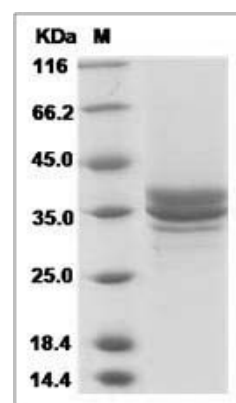
### Storage

Store it under sterile conditions at  $-20^{\circ}\text{C}$  to  $-80^{\circ}\text{C}$ . It is recommended that the protein be aliquoted for optimal storage. Avoid repeated freeze-thaw cycles.

### Reconstitution

Adding sterile water, prepare a stock solution of 0.25 mg/ml. Concentration is measured by UV-Vis.

### SDS-PAGE



Human DC-SIGNR / CD299 Protein ( )