

General Information

Gene Name Synonym

Selectin P ligand

Protein Construction

A DNA sequence encoding the extracellular domain of mouse SELPLG (Q62170) (Met1-Cys307) was expressed with six amino acids (LEVLFQ) at the C- terminus.

Organism

Mouse

Expression Host

Human Cells

QC Testing

Purity

> 85 % as determined by SDS-PAGE

Endotoxin

< 1.0 EU per μg of the protein as determined by the LAL method

Stability

Samples are stable for up to twelve months from date of receipt at -70°C

Predicted N terminal

Leu 18

Molecular Mass

The recombinant mouse SELPLG consists of 297 amino acids and has a calculated molecular mass of 31.2 kDa. The recombinant protein migrates as an approximately 54.9 kDa band in SDS-PAGE under reducing conditions.

Formulation

Lyophilized from sterile PBS, pH 7.4.

1. 5 % trehalose and mannitol are added as protectants before lyophilization.

2. Please contact us for any concerns or special requirements.

Usage Guide

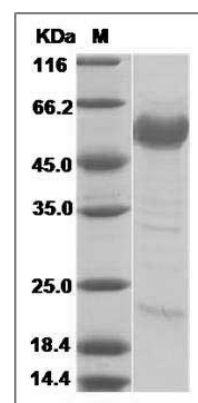
Storage

Store it under sterile conditions at -20°C to -80°C . It is recommended that the protein be aliquoted for optimal storage. Avoid repeated freeze-thaw cycles.

Reconstitution

Adding sterile water, prepare a stock solution of 0.25 mg/ml. Concentration is measured by UV-Vis.

SDS-PAGE



Mouse PSGL-1 / CD162 / SELPLG Protein SDS-PAGE