

SMYD1-Specific antibody



Catalog Number: 115406

Product name

SMYD1-Specific antibody

Specificity

Human, Mouse; other species not tested.

Antibody description

SMYD1-Specific Rabbit Polyclonal antibody. Positive IHC detected in human testis tissue, human heart tissue, human kidney tissue, human liver tissue, human lung tissue, human ovary tissue, human placenta tissue, human skin tissue, human spleen tissue. Positive WB detected in mouse heart tissue, human skeletal muscle tissue, mouse skeletal muscle tissue. Positive IP detected in mouse heart tissue. Observed molecular weight by Western-blot: 56 kDa

Preparation

This antibody was obtained by immunization of Peptide (Accession Number: NM_198274). Purification method: Antigen affinity purified.

Formulation

PBS with 0.02% sodium azide and 50% glycerol pH 7.3.

Storage

Store at -20°C. DO NOT ALIQUOT

Clonality

Polyclonal

Ig Type

Rabbit IgG

Applications

ELISA, WB, IHC, IP

Dilutions

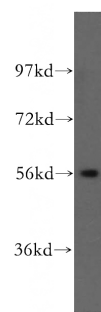
Recommended Dilution:

WB: 1:200-1:2000

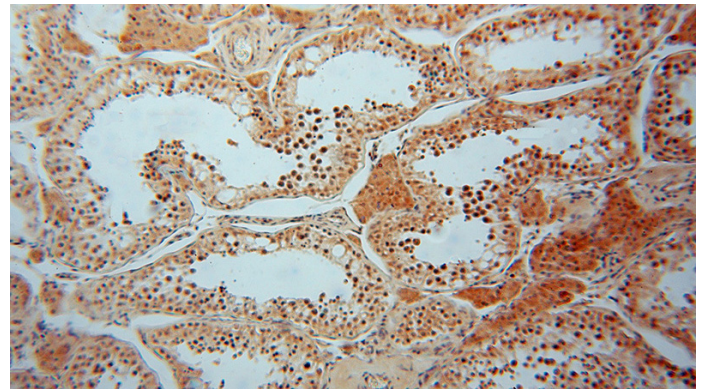
IP: 1:200-1:2000

IHC: 1:20-1:200

Validations



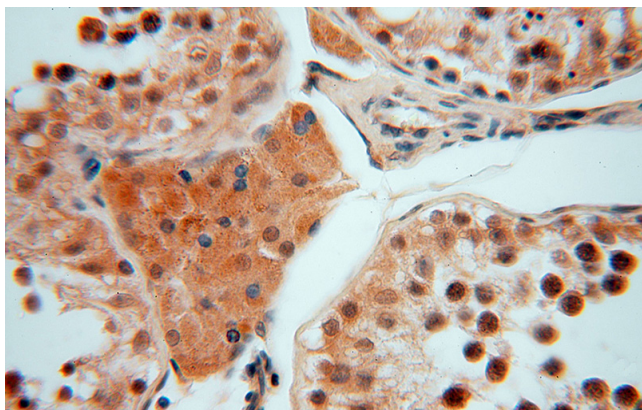
mouse heart tissue were subjected to SDS PAGE followed by western blot with Catalog No:115406(SMYD1-Specific antibody) at dilution of 1:500



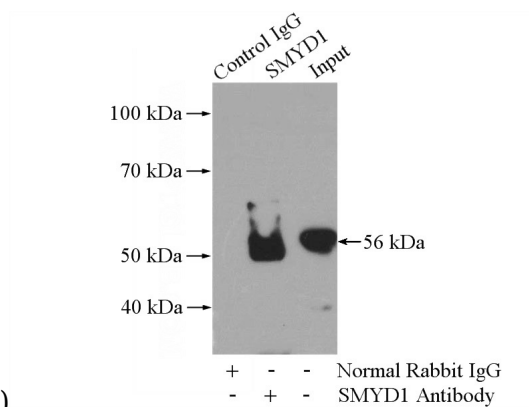
Immunohistochemical of paraffin-embedded human testis using Catalog No:115406(SMYD1-Specific antibody) at dilution of 1:50 (under 10x lens)

SMYD1-Specific antibody

Catalog Number: 115406



Immunohistochemical of paraffin-embedded human testis using Catalog No:115406(SMYD1-Specific antibody) at dilution of 1:50 (under 40x



lens)

IP Result of anti-SMYD1-Specific (IP:Catalog No:115406, 4ug; Detection:Catalog No:115406 1:500) with mouse heart tissue lysate 4000ug.