

# Anti-Sele antibody



Catalog Number: 175406

## Product name

Anti-Sele antibody

## Specificity

Human, Mouse, Rat, Chicken, Dog, Pig, Horse, Rabbit

## Antibody description

Rabbit polyclonal antibody to Sele

## Preparation

This antigen of this antibody was klh conjugated synthetic peptide derived from mouse e-selectin 501-612/612

## Formulation

Liquid, 0.01M TBS(pH7.4) with 1% BSA, 0.03% Proclin300 and 50% Glycerol.

## Storage

Store at -20°C for one year. Avoid repeated freeze/thaw cycles. The lyophilized antibody is stable at room temperature for at least one month and for greater than a year when kept at -20°C. When reconstituted in sterile pH 7.4 0.01M PBS or diluent of antibody the antibody is stable for at least two weeks at 2-4°C.

## Clonality

Polyclonal

## Ig Type

Rabbit IgG

## Applications

WB, IHC-P

## Dilutions

WB:1:500-2000

IHC-P:1:400-800

## Validations

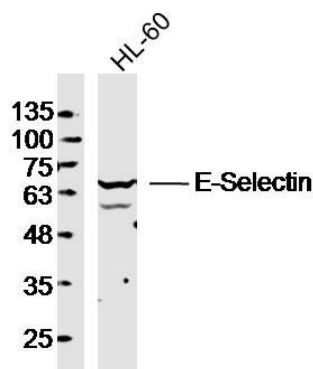


Fig1: Sample: HL-60 Cell (Human) Lysate at 40 ug; Primary: Anti- E-Selectin at 1/300 dilution; Secondary: IRDye800CW Goat Anti-Rabbit IgG at 1/20000 dilution; Predicted band size: 65 kD; Observed band size: 65 kD

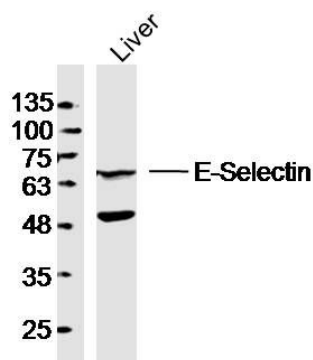
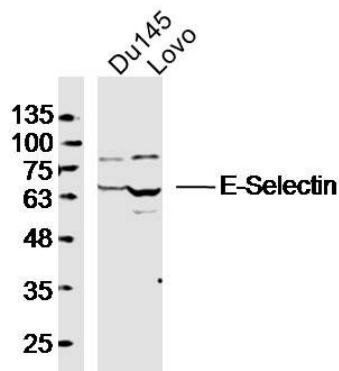


Fig2: Sample: Liver (Mouse) Lysate at 40 ug; Primary: Anti- E-Selectin at 1/300 dilution; Secondary: IRDye800CW Goat Anti-Rabbit IgG at 1/20000 dilution; Predicted band size: 65 kD; Observed band size: 65 kD



Catalog Number: 175406

---

Fig3: Sample:; DU145 Cell Lysate at 40 ug; LOVO Cell Lysate at 40 ug; Primary: Anti-E-Selectin (wt-p53) at 1/300 dilution; Secondary: IRDye800CW Goat Anti-Rabbit IgG at 1/20000 dilution; Predicted band size: 65 kD; Observed band size:

Fig4: Sample: Siha Cell Lysate at 40 ug; Primary: Anti- E-Selectin at 1/300 dilution; Secondary: IRDye800CW Goat Anti-Rabbit IgG at 1/20000 dilution; Predicted band size: 65 kD; Observed band size: 65 kD

