

# RAB11B-Specific antibody



Catalog Number: 114406

## Product name

RAB11B-Specific antibody

## Specificity

Human, Mouse, Rat; other species not tested.

## Antibody description

RAB11B-Specific Rabbit Polyclonal antibody. Positive IHC detected in human lung tissue, human brain tissue, human placenta tissue. Positive WB detected in human brain tissue, fetal human brain tissue, HeLa cells, human testis tissue, mouse testis tissue. Observed molecular weight by Western-blot: 24 kDa

## Preparation

This antibody was obtained by immunization of Peptide (Accession Number: NM\_004218). Purification method: Antigen affinity purified.

## Formulation

PBS with 0.02% sodium azide and 50% glycerol pH 7.3.

## Storage

Store at -20°C. DO NOT ALIQUOT

## Clonality

Polyclonal

## Ig Type

Rabbit IgG

## Applications

ELISA, WB, IHC

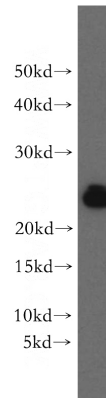
## Dilutions

Recommended Dilution:

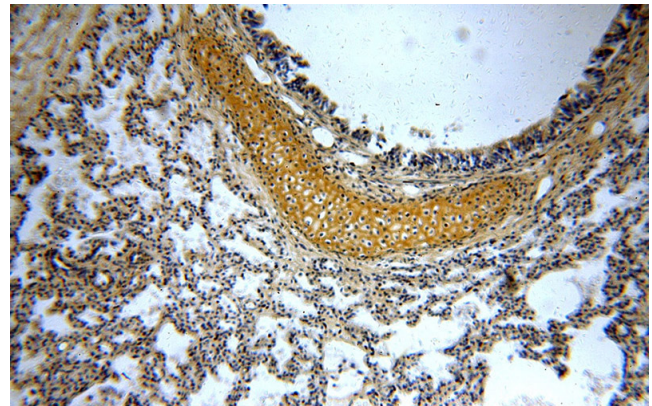
WB: 1:200-1:2000

IHC: 1:20-1:200

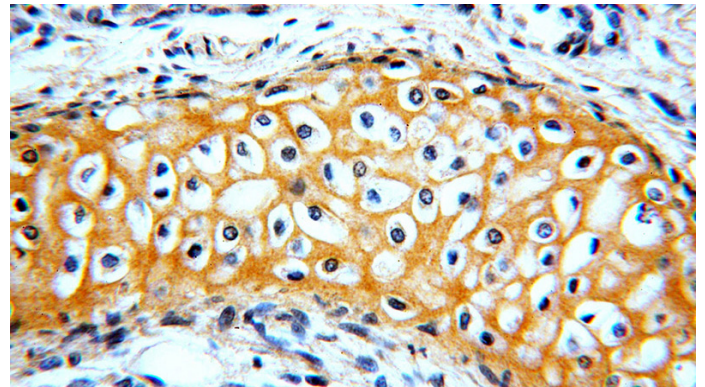
## Validations



human brain tissue were subjected to SDS PAGE followed by western blot with Catalog No:114406(RAB11B-Specific antibody) at dilution of 1:300



Immunohistochemical of paraffin-embedded human lung using Catalog No:114406(RAB11B-Specific antibody) at dilution of 1:100 (under 10x lens)



Immunohistochemical of paraffin-embedded human lung using Catalog No:114406(RAB11B-

# RAB11B-Specific antibody



Catalog Number: 114406

---

Specific antibody) at dilution of 1:100 (under 40x lens)