

Anti-IL-1 beta antibody



Catalog Number: 103406

Product name

Anti-IL-1 beta antibody

Immunogen

[Rat IL-1 beta \(mature form\) recombinant protein](#)

Specificity

Rat IL-1 beta / IL1B

Antibody description

Rabbit polyclonal to IL-1 beta

Preparation

Produced in rabbits immunized with purified, recombinant Rat IL-1 beta / IL1B (rR IL-1 beta / IL1B; Q63264-1; Val 117-Ser 268). IL-1 beta / IL1B specific IgG was purified by Rat IL-1 beta / IL1B affinity chromatography.

Formulation

0.2 µm filtered solution in PBS with 5% trehalose

Storage

This antibody can be stored at 2°C-8°C for one month without detectable loss of activity. Antibody products are stable for twelve months from date of receipt when stored at -20°C to -80°C.

Preservative-Free.

Sodium azide is recommended to avoid contamination (final concentration 0.05%-0.1%). It is toxic to cells and should be disposed of properly. Avoid repeated freeze-thaw cycles.

Clonality

Polyclonal

Ig Type

Rabbit IgG

Applications

ELISA, WB

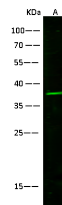
Dilutions

WB: 10-30 µg/mL

ELISA: 0.1-0.2 µg/mL

This antibody can be used at 0.1-0.2 µg/mL with the appropriate secondary reagents to detect Rat IL1B. The detection limit for Rat IL1B is approximately 0.00245 ng/well.

Validations



Items	Lanes
Sample (whole cell lysate)	A
Sample Volume (µg/lane)	Molt4 30
Gel	13% SDS-PAGE reducing gel
Recommended Concentration	10-30 µg/ml
Secondary Antibody	Dylight 800-labeled Antibody To Rabbit IgG (H+L), at 1:5000 dilution
Developed using Odyssey imaging system	
Explanation	Predicted band size : 31 kDa Observed band size : 37 kDa

IL-1 beta / IL1B Antibody, Rabbit PAb, Antigen Affinity Purified, Western blot