

# Anti-FXR1 antibody



Catalog Number: 142406

## Product name

Anti-FXR1 antibody

## Specificity

Human FXR1

## Antibody description

Rabbit Polyclonal to Human FXR1

## Preparation

Produced in rabbits immunized with a synthetic peptide corresponding to the center region of the Human FXR1, and purified by antigen affinity chromatography.

## Formulation

0.2  $\mu\text{m}$  filtered solution in PBS

## Storage

This antibody can be stored at 2°C-8°C for one month without detectable loss of activity. Antibody products are stable for twelve months from date of receipt when stored at -20°C to -80°C. Preservative-Free.

Sodium azide is recommended to avoid contamination (final concentration 0.05%-0.1%). It is toxic to cells and should be disposed of properly. Avoid repeated freeze-thaw cycles.

## Clonality

Polyclonal

## Ig Type

Rabbit IgG

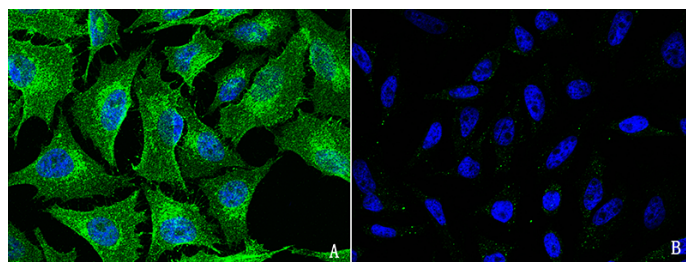
## Applications

ICC/IF, IF

## Dilutions

ICC/IF: 0.5-3  $\mu\text{g}/\text{mL}$

## Validations



Human FXR1 Immunofluorescence(IF) 14587