

# CD206 antibody

Catalog Number: 109006

## Product name

CD206 antibody

## Specificity

Human, Mouse; other species not tested.

## Antibody description

CD206 Rabbit Polyclonal antibody. Positive IHC detected in human liver tissue. Positive FC detected in RAW 264.7 cells. Positive WB detected in human kidney tissue, HepG2 cells. Observed molecular weight by Western-blot: 165-170 kDa, 70 kDa

## Preparation

This antibody was obtained by immunization of Peptide (Accession Number: NM\_002438). Purification method: Antigen affinity purified.

## Formulation

PBS with 0.02% sodium azide and 50% glycerol pH 7.3.

## Storage

Store at -20°C. DO NOT ALIQUOT

## Clonality

Polyclonal

## Ig Type

Rabbit IgG

## Applications

ELISA, WB, IHC, FC

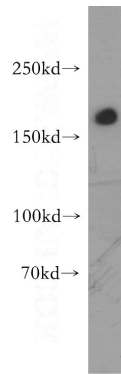
## Dilutions

Recommended Dilution:

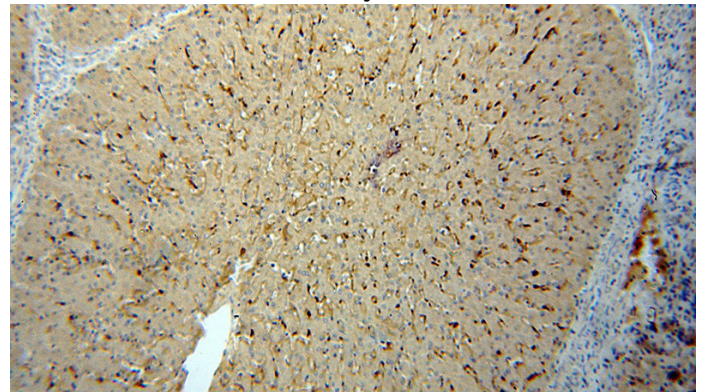
WB: 1:200-1:2000

IHC: 1:20-1:200

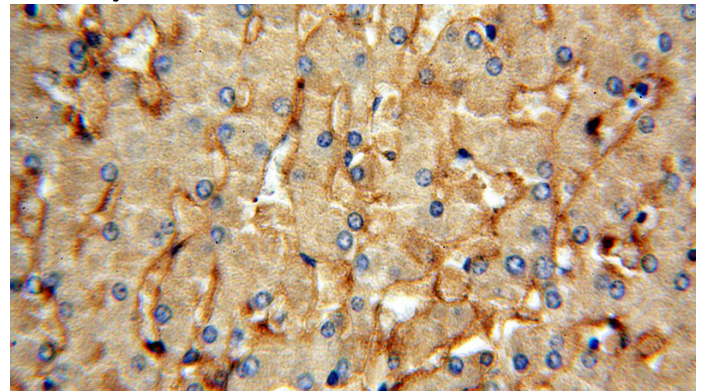
## Validations



human kidney tissue were subjected to SDS PAGE followed by western blot with Catalog No:109006(MRC1 antibody) at dilution of 1:500



Immunohistochemical of paraffin-embedded human liver using Catalog No:109006(MRC1 antibody) at dilution of 1:100 (under 10x lens)

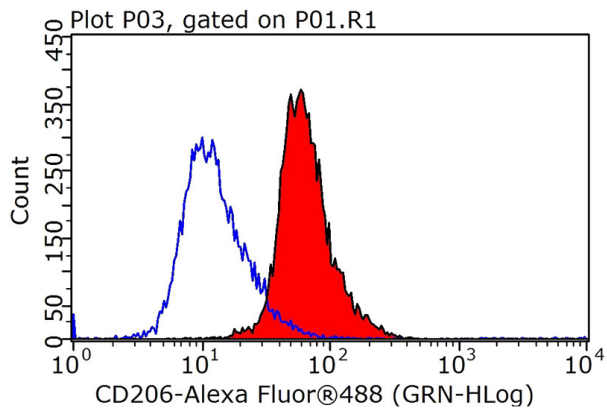


Immunohistochemical of paraffin-embedded human liver using Catalog No:109006(MRC1 antibody) at dilution of 1:100 (under 40x lens)

# CD206 antibody



Catalog Number: 109006



1X10<sup>6</sup> RAW 264.7 cells were stained with 0.2ug MRC1 antibody (Catalog No:109006, red) and control antibody (blue). Fixed with 90% MeOH blocked with 3% BSA (30 min). Alexa Fluor 488-conjugated AffiniPure Goat Anti-Rabbit IgG(H+L) with dilution 1:1000.