

# Cytokeratin 13-Specific antibody



Catalog Number: 107006

## Product name

Cytokeratin 13-Specific antibody

## Specificity

Human, Mouse, Rat; other species not tested.

## Antibody description

Cytokeratin 13-Specific Rabbit Polyclonal antibody. Positive WB detected in A431 cells. Positive IHC detected in human skin tissue, human cervical cancer tissue, human lung cancer tissue. Observed molecular weight by Western-blot: 50kd

## Preparation

This antibody was obtained by immunization of Peptide (Accession Number: NM\_153490). Purification method: Antigen affinity purified.

## Formulation

PBS with 0.02% sodium azide and 50% glycerol pH 7.3.

## Storage

Store at -20°C. DO NOT ALIQUOT

## Clonality

Polyclonal

## Ig Type

Rabbit IgG

## Applications

ELISA, WB, IHC

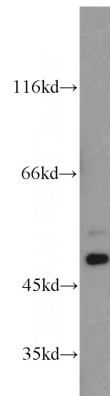
## Dilutions

Recommended Dilution:

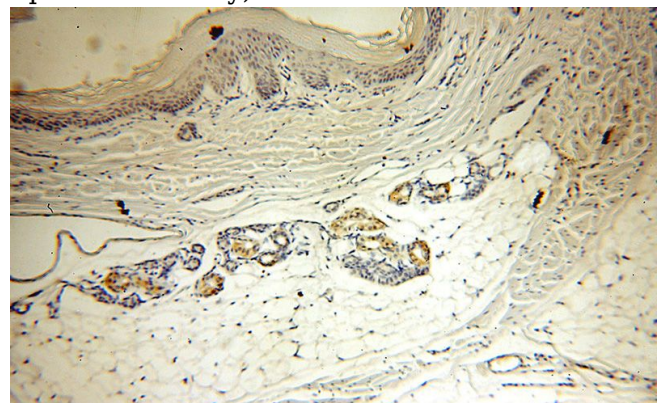
WB: 1:200-1:1000

IHC: 1:20-1:200

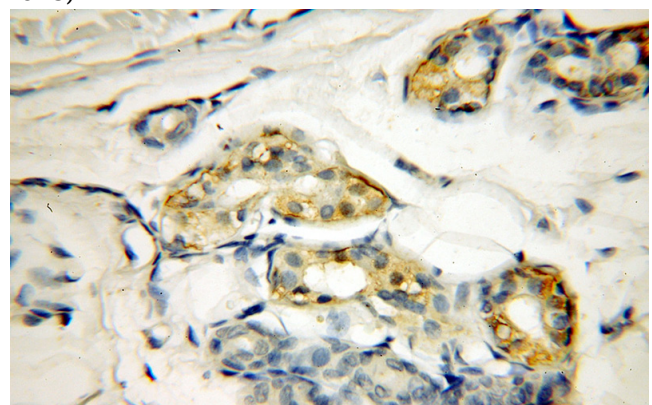
## Validations



A431 cells were subjected to SDS PAGE followed by western blot with Catalog No:109791(KRT13-Specific antibody) at dilution of 1:200



Immunohistochemical of paraffin-embedded human skin using Catalog No:109791(KRT13-Specific antibody) at dilution of 1:50 (under 10x lens)



Immunohistochemical of paraffin-embedded human skin using Catalog No:109791(KRT13-

# Cytokeratin 13-Specific antibody



Catalog Number: 107006

---

Specific antibody) at dilution of 1:50 (under 40x lens)