

# Anti-eIF5A Rabbit antibody



Catalog Number: 167006

## Product name

Anti-eIF5A Rabbit antibody

## Specificity

Human, Mouse, Rat

## Antibody description

eIF5A Rabbit polyclonal antibody

## Preparation

Antigen: A synthesized peptide derived from human eIF5A

## Formulation

Rabbit IgG in phosphate buffered saline , pH 7.4, 150mM NaCl, 0.02% sodium azide and 50% glycerol.

## Storage

Store at 4°C short term. Store at -20°C long term. Avoid freeze / thaw cycle.

## Clonality

Polyclonal

## Ig Type

Rabbit IgG

## Applications

WB, IHC-P, ICC/IF, IP, FC

## Dilutions

WB: 1/5000-1/10000

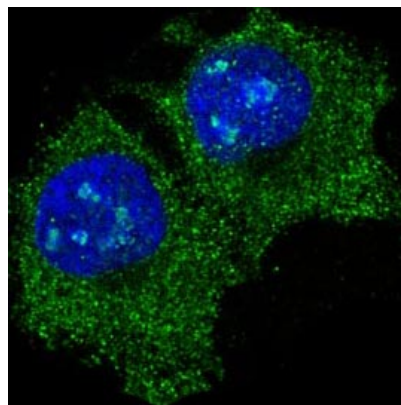
IHC: 1/50-1/200

ICC/IF: 1/100-1/500

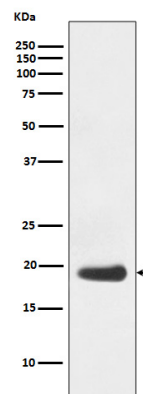
IP: 1/50

FC: 1/50

## Validations

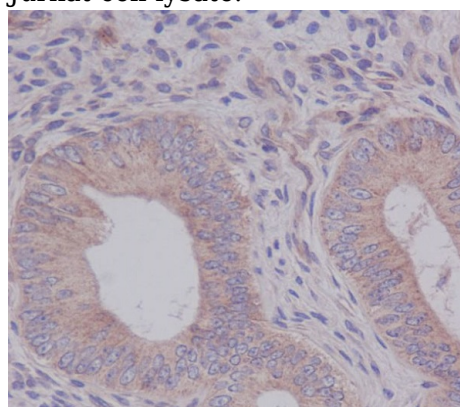


Immunofluorescent analysis of HeLa cells, using



eIF5A Antibody.

Western blot analysis of eIF5A expression in Jurkat cell lysate.



Immunohistochemical analysis of paraffin-embedded human uterus cancer, using eIF5A Antibody.