

# Anti-Spp1 antibody

Catalog Number: 175006

## Product name

Anti-Spp1 antibody

## Specificity

Human, Rat, Mouse

## Antibody description

Rabbit polyclonal antibody to Spp1

## Preparation

This antigen of this antibody was synthetic peptide within c-terminal mouse osteopontin.

## Formulation

Liquid, 1\*PBS (pH7.4), 0.2% BSA, 40% Glycerol.  
Preservative: 0.05% Sodium Azide.

## Storage

Store at +4°C after thawing. Aliquot store at -20°C or -80°C. Avoid repeated freeze / thaw cycles.

## Clonality

Polyclonal

## Ig Type

Rabbit IgG

## Applications

WB

## Dilutions

WB: 1:500-1:2000

## Validations

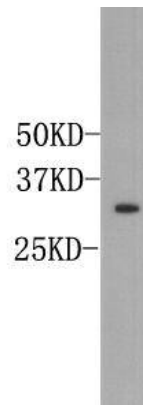


Fig1:: Western blot analysis of Osteopontin on mouse liver tissue lysate. Proteins were transferred to a PVDF membrane and blocked with 5% BSA in PBS for 1 hour at room temperature. The primary antibody ( 1/1000) was used in 5% BSA at room temperature for 2 hours. Goat Anti-Rabbit IgG - HRP Secondary Antibody (HA1001) at 1:5,000 dilution was used for 1 hour at room temperature.

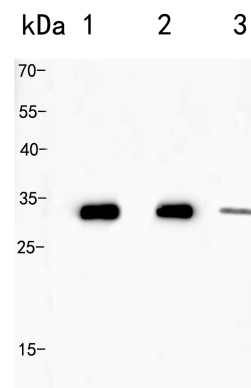


Fig2:: Western blot analysis of Osteopontin on different lysates. Proteins were transferred to a PVDF membrane and blocked with 5% BSA in PBS for 1 hour at room temperature. The primary antibody ( 1/2000) was used in 5% BSA at room temperature for 2 hours. Goat Anti-Rabbit IgG - HRP Secondary Antibody (HA1001) at 1:5,000 dilution was used for 1 hour at room temperature.; Positive control.; Lane 1: Rat kidney tissue lysate; Lane 2: Mouse kidney tissue lysate; Lane 3: HepG2 cell lysate