

SARS Polyclonal Antibody



Catalog Number: 165006

Product name

SARS Polyclonal Antibody

Specificity

Human, Mouse, Rat

Antibody description

Polyclonal antibody to SARS

Preparation

Antigen: Recombinant fusion protein containing a sequence corresponding to amino acids 1-300 of human SARS (NP_006504.2).

Formulation

PBS with 0.02% sodium azide, 50% glycerol, pH7.3.

Storage

Store at -20°C. Avoid freeze / thaw cycles.

Clonality

Polyclonal

Ig Type

Rabbit IgG

Applications

WB, IHC, IF

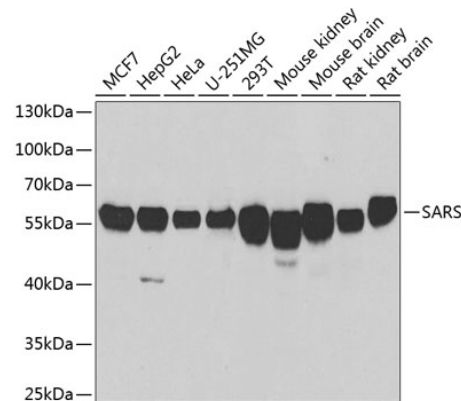
Dilutions

WB 1:500 - 1:2000

IHC 1:50 - 1:200

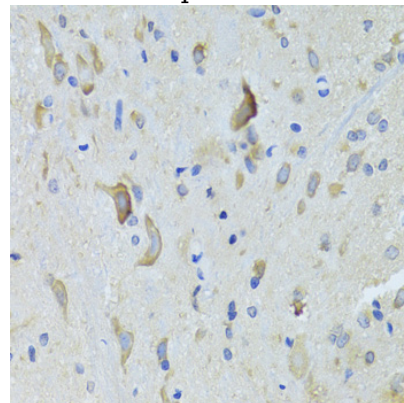
IF 1:50 - 1:200

Validations



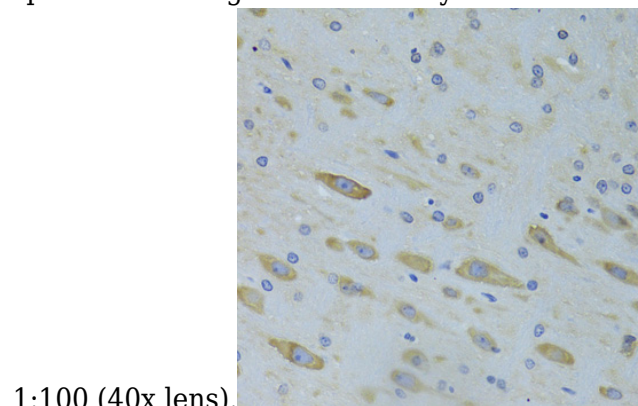
Western blot - SARS Polyclonal Antibody

Western blot analysis of extracts of various cell lines, using SARS antibody at 1:1000 dilution. Secondary antibody: HRP Goat Anti-Rabbit IgG (H+L) at 1:10000 dilution. Lysates/proteins: 25ug per lane. Blocking buffer: 3% nonfat dry milk in TBST. Detection: ECL Basic Kit. Exposure time: 90s.



Immunohistochemistry - SARS Polyclonal Antibody

Immunohistochemistry of paraffin-embedded rat spinal cord using SARS Antibody at dilution of



1:100 (40x lens).

SARS Polyclonal Antibody



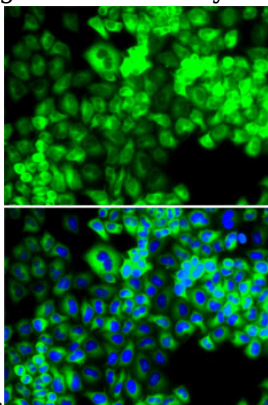
Catalog Number: 165006

Immunohistochemistry - SARS Polyclonal Antibody

Immunofluorescence - SARS Polyclonal Antibody

Immunohistochemistry of paraffin-embedded rat brain using SARS Antibody at dilution of 1:100

Immunofluorescence analysis of MCF7 cells using SARS antibody . Blue: DAPI for nuclear staining.



(40x lens).