

# MZB1 antibody

Catalog Number: 113006

## Product name

MZB1 antibody

## Specificity

Human; other species not tested.

## Antibody description

MZB1 Rabbit Polyclonal antibody. Positive WB detected in Raji cells. Positive IHC detected in human gliomas tissue, human small intestine tissue. Observed molecular weight by Western-blot: 19-21 kDa

## Preparation

This antibody was obtained by immunization of MZB1 recombinant protein (Accession Number: NM\_016459). Purification method: Antigen affinity purified.

## Formulation

PBS with 0.1% sodium azide and 50% glycerol pH 7.3.

## Storage

Store at -20°C. DO NOT ALIQUOT

## Clonality

Polyclonal

## Ig Type

Rabbit IgG

## Applications

ELISA, WB, IHC

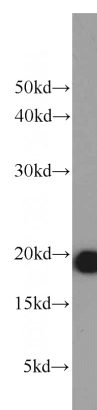
## Dilutions

Recommended Dilution:

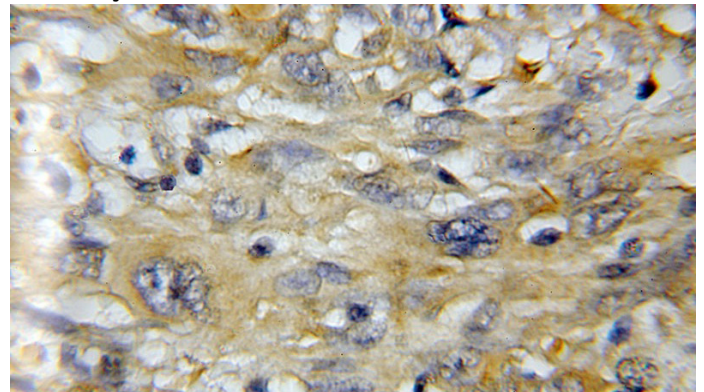
WB: 1:500-1:5000

IHC: 1:20-1:200

## Validations



Raji cells were subjected to SDS PAGE followed by western blot with Catalog No:113006(MZB1 antibody) at dilution of 1:1000



Immunohistochemical of paraffin-embedded human gliomas using Catalog No:113006(MZB1 antibody) at dilution of 1:50 (under 40x lens)