

# KIF20A antibody

Catalog Number: 112006

## Product name

KIF20A antibody

## Specificity

Human, Mouse, Rat; other species not tested.

## Antibody description

KIF20A Rabbit Polyclonal antibody. Positive IP detected in HEK-293 cells. Positive WB detected in HEK-293 cells, HL-60 cells. Observed molecular weight by Western-blot: 100 kDa

## Preparation

This antibody was obtained by immunization of KIF20A recombinant protein (Accession Number: NM\_005733). Purification method: Antigen affinity purified.

## Formulation

PBS with 0.02% sodium azide and 50% glycerol pH 7.3.

## Storage

Store at -20°C. DO NOT ALIQUOT

## Clonality

Polyclonal

## Ig Type

Rabbit IgG

## Applications

ELISA, WB, IP

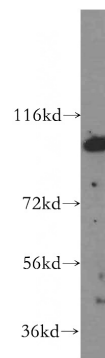
## Dilutions

Recommended Dilution:

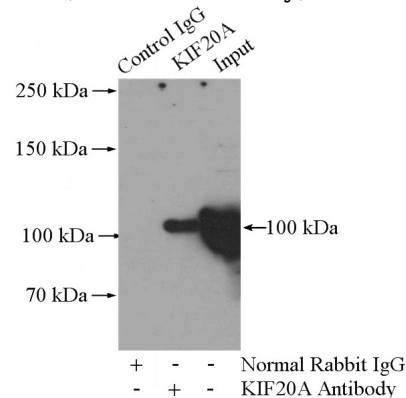
WB: 1:500-1:5000

IP: 1:200-1:2000

## Validations



HEK-293 cells were subjected to SDS PAGE followed by western blot with Catalog No:112006(KIF20A antibody) at dilution of 1:500



IP Result of anti-KIF20A (IP:Catalog No:112006, 4ug; Detection:Catalog No:112006 1:500) with HEK-293 cells lysate 1200ug.