

General Information

Gene Name Synonym

S1 protein

Protein Construction

The target gene encoding Val16-Arg685 is expressed with a 6His tag at the C-terminus.

Organism

Severe acute respiratory syndrome coronavirus 2

Expression Host

Human Cells

QC Testing

Activity

Measured by its binding ability in a functional ELISA. Immobilized human ACE2 protein (Fc tag) at 2 µg/mL (100 µL/well) can bind SARS-CoV-2/2019-nCoV Spike Protein (S1 Subunit, His tag), the EC₅₀ of SARS-CoV-2/2019-nCoV Spike Protein (S1 Subunit, His tag) is 200-600 ng/mL.

Purity

Greater than 95% as determined by reducing SDS-PAGE.

Endotoxin

<5 EU/mg

Stability

Samples are stable for up to twelve months from date of receipt at -70°C

Molecular Mass

100-130kDa, reducing conditions

Formulation

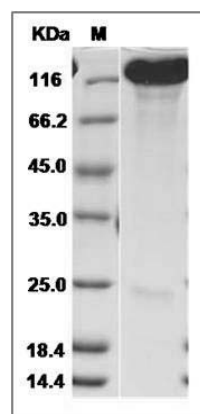
Supplied as a 0.2 µM filtered solution of PBS, PH7.4.

Usage Guide

Storage

Store it under sterile conditions at -20°C to -80°C. It is recommended that the protein be aliquoted for optimal storage. Avoid repeated freeze-thaw cycles.

SDS-PAGE



2019-nCoV S1 Protein (Mammalian, C-6His)