

# Anti-Dux antibody



Catalog Number: 175795

## Product name

Anti-Dux antibody

## Specificity

Mouse

## Antibody description

Rabbit polyclonal antibody to Dux

## Preparation

This antigen of this antibody was synthetic peptide within mouse dux aa 520-570.

## Formulation

Liquid, 1\*TBS (pH7.4), 0.2% BSA, 50% Glycerol.  
Preservative: 0.05% Sodium Azide.

## Storage

Store at +4°C after thawing. Aliquot store at -20°C. Avoid repeated freeze / thaw cycles.

## Clonality

Polyclonal

## Ig Type

Rabbit IgG

## Applications

WB

## Dilutions

WB: 1:500 - 1:2,000

## Validations

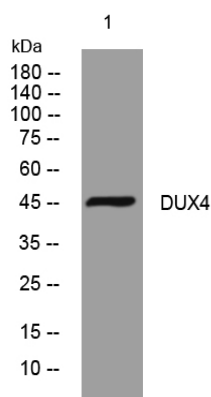


Fig1: Western blot analysis of lysates from HeLa cells, primary antibody was diluted at 1:1,000, 4°C over night