

# Anti-LSM1 antibody



Catalog Number: 105795

## Product name

Anti-LSM1 antibody

## Immunogen

[Human LSM1 \(His Tag\) recombinant protein](#)

## Specificity

Human LSM1

## Antibody description

Rabbit monoclonal to LSM1

## Preparation

This antibody was obtained from a rabbit immunized with purified, recombinant Human LSM1 (rh LSM1; O15116; Met1-Tyr133).

## Formulation

0.2 µm filtered solution in PBS

## Storage

This antibody can be stored at 2°C-8°C for one month without detectable loss of activity. Antibody products are stable for twelve months from date of receipt when stored at -20°C to -80°C.

Preservative-Free.

Sodium azide is recommended to avoid contamination (final concentration 0.05%-0.1%). It is toxic to cells and should be disposed of properly. Avoid repeated freeze-thaw cycles.

## Clonality

Monoclonal

## Ig Type

Rabbit IgG

## Applications

ELISA, WB

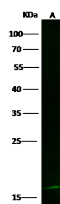
## Dilutions

WB: 10-20 µg/ml

ELISA: 0.1-0.2 µg/mL

This antibody can be used at 0.1-0.2 µg/mL µg/ml with the appropriate secondary reagents to detect Human LSM1.

## Validations



Lanes	A
Items	
Sample (whole cell lysate)	k562
Sample Volume (µg/lane)	30
Gel	13% SDS-PAGE reducing gel
Recommended Concentration	10-20 µg/ml
Secondary Antibody	Dylight 800 labeled Antibody to Rabbit IgG (H+L) at 1:5000 dilution. Developed using Odyssey imaging system.
Explanation	Predicted band size : 15 kDa Observed band size : 17 kDa

LSM1 Antibody, Rabbit MAb, Western blot