

# Anti-NF- $\kappa$ B p65 Rabbit antibody



Catalog Number: 167395

## Product name

Anti-NF- $\kappa$ B p65 Rabbit antibody

## Specificity

Human, Mouse

## Antibody description

NF- $\kappa$ B p65 Rabbit polyclonal antibody

## Preparation

Antigen: A synthetic peptide of human NF- $\kappa$ B p65

## Formulation

Supplied in 50nM Tris-Glycine(pH 7.4), 0.15M NaCl, 40%Glycerol, 0.01% sodium azide and 0.05% BSA.

## Storage

Store at -20°C. Stable for 12 months from date of receipt.

## Clonality

Polyclonal

## Ig Type

Rabbit IgG

## Applications

WB, IHC-P, ICC/IF, FC, IP

## Dilutions

WB: 1/5000

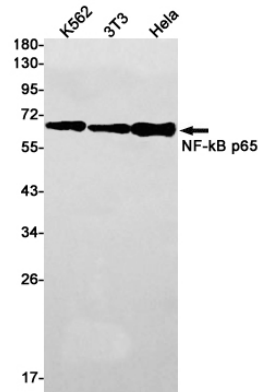
IHC: 1/20

ICC/IF: 1/50

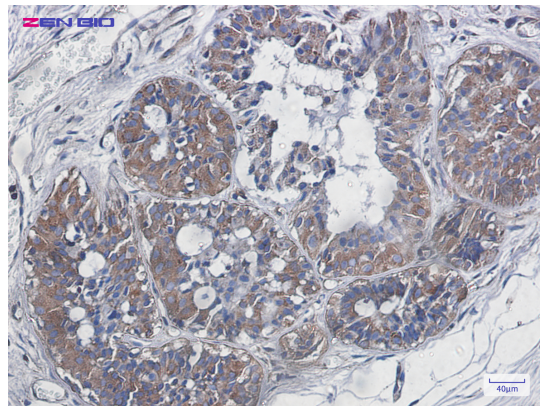
FC: 1/20

IP: 1/50

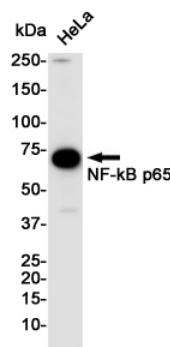
## Validations



Western blot detection of NF- $\kappa$ B p65 in K562,3T3,HeLa cell lysates using NF- $\kappa$ B p65 Rabbit pAb(1:1000 diluted).Predicted band size:60kDa.Observed band size:65kDa.



Immunohistochemistry of NF- $\kappa$ B p65 in paraffin-embedded Human breast cancer tissue using NF- $\kappa$ B p65 Rabbit pAb at dilution 1/20



Western blot detection of NF- $\kappa$ B p65 in HeLa cell lysates using NF- $\kappa$ B p65 Rabbit pAb(1:1000 diluted).Predicted band size:60KDa.Observed band size:65KDa.