

# Human BCHE/Butyrylcholinesterase (His Tag) recombinant protein



Catalog Number: 502395

## General Information

### Gene Name Synonym

Acylcholine acylhydrolase; Butyrylcholine esterase; Choline esterase II; Pseudocholinesterase

### Protein Construction

A DNA sequence encoding the human BCHE (NP\_000046.1) (Met 1-Leu 602) was expressed, fused with a polyhistidine tag at the C-terminus.

### Organism

Human

### Expression Host

Human Cells

## QC Testing

### Activity

Measured by its ability to cleave Butyrylthiocholine. The specific activity is >50,000 pmoles/min/ $\mu$ g.

### Purity

> 97 % as determined by SDS-PAGE

### Endotoxin

< 1.0 EU per  $\mu$ g of the protein as determined by the LAL method

### Stability

Samples are stable for up to twelve months from date of receipt at -70°C

### Predicted N terminal

Glu 29

### Molecular Mass

The recombinant human BCHE consists of 585 amino acids and has a predicted molecular mass of 66.5 kDa. In SDS-PAGE under reducing conditions, the apparent molecular mass of rh BCHE is approximately 85-95 kDa due to glycosylation.

### Formulation

Lyophilized from sterile PBS, pH 7.4  
1. 5 % trehalose and mannitol are added as protectants before lyophilization.  
2. Please contact us for any concerns or special requirements.

## Usage Guide

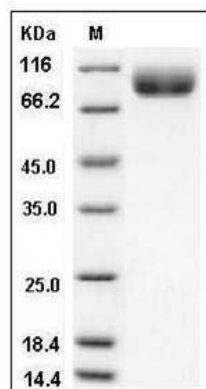
### Storage

Store it under sterile conditions at -20°C to -80°C. It is recommended that the protein be aliquoted for optimal storage. Avoid repeated freeze-thaw cycles.

### Reconstitution

Adding sterile water, prepare a stock solution of 0.25 mg/ml. Concentration is measured by UV-Vis.

### SDS-PAGE



Human BCHE / Butyrylcholinesterase Protein (His Tag) SDS-PAGE