

# EPS8L2 antibody



Catalog Number: 110395

## Product name

EPS8L2 antibody

IHC: 1:20-1:200

IF: 1:10-1:100

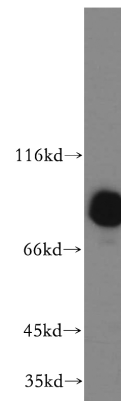
## Specificity

Human, Mouse; other species not tested.

## Validations

## Antibody description

EPS8L2 Rabbit Polyclonal antibody. Positive IF detected in HeLa cells. Positive IHC detected in human placenta tissue. Positive WB detected in HeLa cells, A431 cells, human placenta tissue, Jurkat cells, mouse skin tissue. Observed molecular weight by Western-blot: 81kd



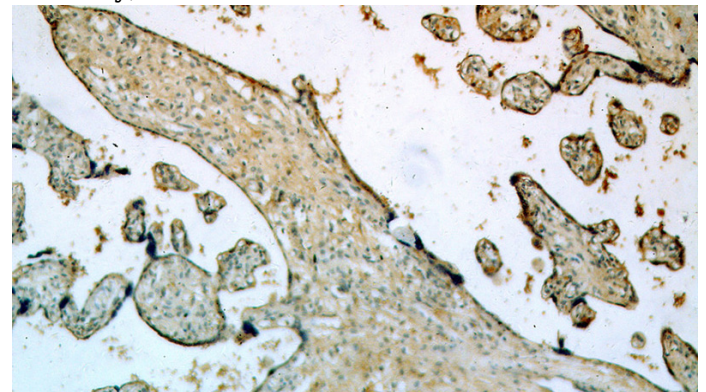
## Preparation

This antibody was obtained by immunization of EPS8L2 recombinant protein (Accession Number: BC002474). Purification method: Antigen affinity purified.

HeLa cells were subjected to SDS PAGE followed by western blot with Catalog No:110395(EPS8L2 antibody) at dilution of 1:1500

## Formulation

PBS with 0.02% sodium azide and 50% glycerol pH 7.3.



## Storage

Store at -20°C. DO NOT ALIQUOT

## Clonality

Polyclonal

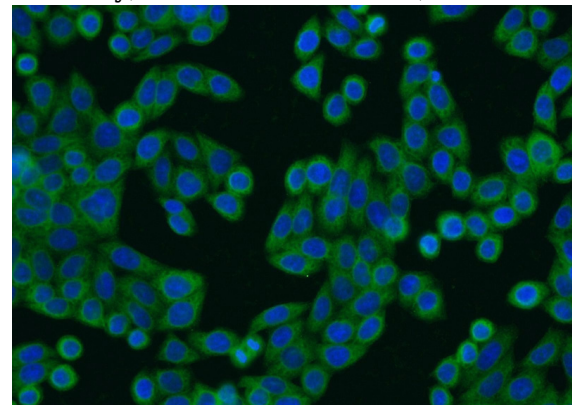
Immunohistochemical of paraffin-embedded human placenta using Catalog No:110395(EPS8L2 antibody) at dilution of 1:100 (under 10x lens)

## Ig Type

Rabbit IgG

## Applications

ELISA, WB, IHC, IF



## Dilutions

Recommended Dilution:

WB: 1:500-1:5000

Immunofluorescent analysis of HeLa cells using Catalog No:110395(EPS8L2 Antibody) at dilution

# EPS8L2 antibody



Catalog Number: 110395

---

of 1:25 and Alexa Fluor 488-conjugated AffiniPure Goat Anti-Rabbit IgG(H+L)