

# C20orf160 antibody



Catalog Number: 108695

## Product name

C20orf160 antibody

## Specificity

Human, Mouse, Rat; other species not tested.

## Antibody description

C20orf160 Rabbit Polyclonal antibody. Positive WB detected in A431 cells, human placenta tissue. Observed molecular weight by Western-blot: 52 kDa

## Preparation

This antibody was obtained by immunization of C20orf160 recombinant protein (Accession Number: XM\_006723706). Purification method: Antigen affinity purified.

## Formulation

PBS with 0.1% sodium azide and 50% glycerol pH 7.3.

## Storage

Store at -20°C. DO NOT ALIQUOT

## Clonality

Polyclonal

## Ig Type

Rabbit IgG

## Applications

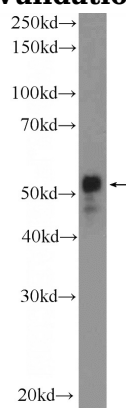
ELISA, WB

## Dilutions

Recommended Dilution:

WB: 1:200-1:1000

## Validations



A431 cells were subjected to SDS PAGE followed by western blot with Catalog No:108695(C20orf160 Antibody) at dilution of 1:300