

Anti-Cleaved PARP (Asp214) Rabbit antibody



Catalog Number: 166695

Product name

Anti-Cleaved PARP (Asp214) Rabbit antibody

IP: 1/50

FC: 1/50

Validations

Specificity

Human

Antibody description

Cleaved PARP (Asp214) Rabbit polyclonal antibody

Preparation

Antigen: A synthesized peptide derived from human Cleaved PARP

Formulation

Rabbit IgG in phosphate buffered saline , pH 7.4, 150mM NaCl, 0.02% sodium azide and 50% glycerol.

Storage

Store at 4°C short term. Store at -20°C long term. Avoid freeze / thaw cycle.

Clonality

Polyclonal

Ig Type

Rabbit IgG

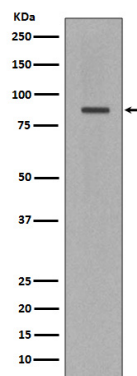
Applications

WB, ICC/IF, IP, FC

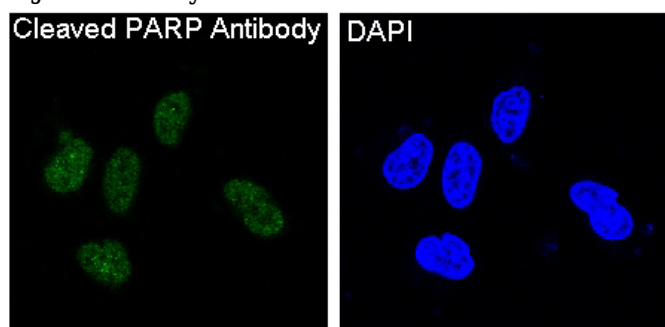
Dilutions

WB: 1/500-1/2000

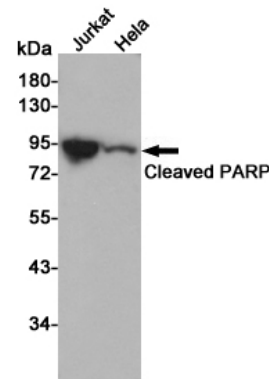
ICC/IF: 1/50-1/200



Western blot analysis of Cleaved PARP expression in Jurkat cell lysate.



Immunofluorescent analysis of HeLa cells, using



Cleaved PARP Antibody .

Western blot analysis of Cleaved PARP expression in Jurkat and HeLa cell lysates using Cleaved PARP antibody at 1/1000 dilution. Predicted band size: 85 kDa. Observed band size: 89 kDa.