

# MME,CD10 antibody



Catalog Number: 112695

## Product name

MME,CD10 antibody

WB: 1:500-1:5000

IP: 1:200-1:2000

## Specificity

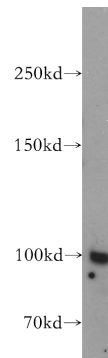
Human,Mouse,Rat; other species not tested.

IHC: 1:20-1:200

## Antibody description

MME,CD10 Rabbit Polyclonal antibody. Positive IP detected in Raji cells. Positive WB detected in mouse kidney tissue, human kidney tissue, rat kidney tissue. Positive IHC detected in human kidney tissue, human renal cell carcinoma tissue. Positive FC detected in Jurkat cells. Observed molecular weight by Western-blot: 100kd

## Validations



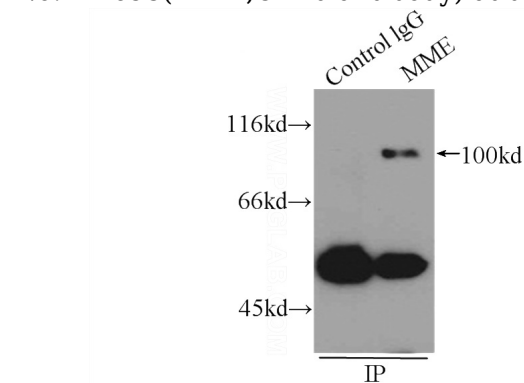
## Preparation

This antibody was obtained by immunization of MME,CD10 recombinant protein (Accession Number: NM\_001354644). Purification method: Antigen affinity purified.

mouse kidney tissue were subjected to SDS PAGE followed by western blot with Catalog No:112695(MME,CD10 antibody) at dilution of

## Formulation

PBS with 0.02% sodium azide and 50% glycerol pH 7.3.



## Storage

Store at -20°C. DO NOT ALIQUOT

1:500

## Clonality

Polyclonal

IP Result of anti-MME,CD10 (IP:Catalog No:112695, 3ug; Detection:Catalog No:112695 1:500) with Raji cells lysate 2400ug.

## Ig Type

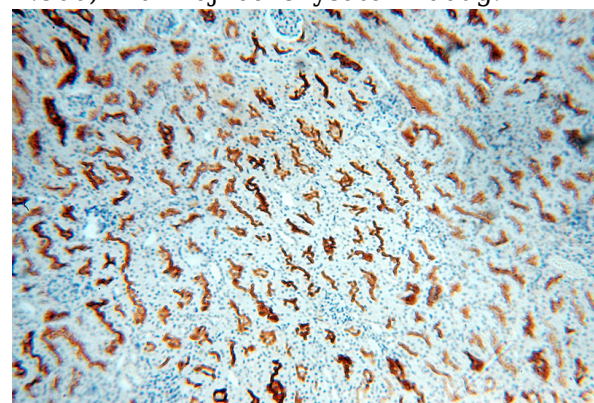
Rabbit IgG

## Applications

ELISA, WB, IHC, IP, FC

## Dilutions

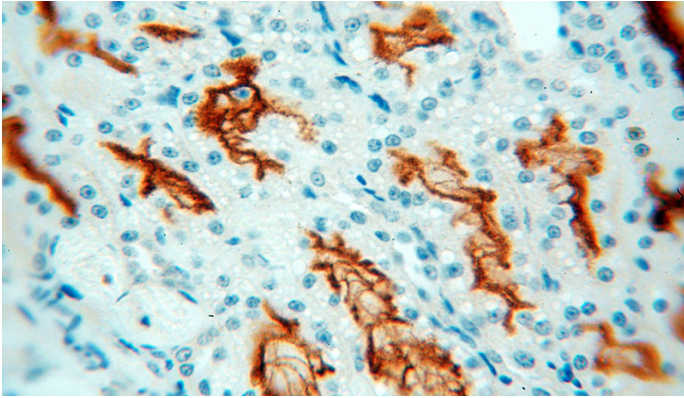
Recommended Dilution:



# MME,CD10 antibody

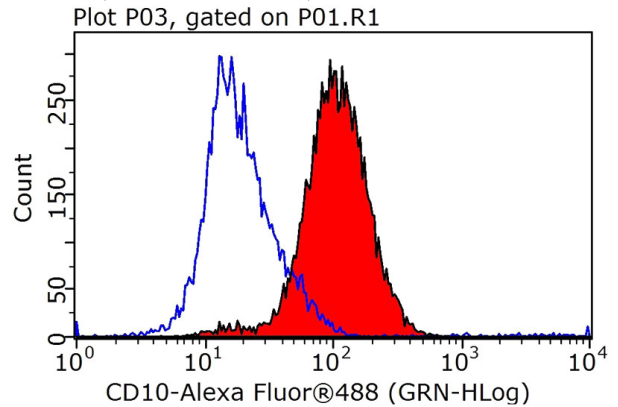
Catalog Number: 112695

Immunohistochemical of paraffin-embedded human kidney using Catalog No:112695(MME,CD10 antibody) at dilution of 1:100 (under 10x lens)



Immunohistochemical of paraffin-embedded human kidney using Catalog No:112695(MME,CD10 antibody) at dilution of

1:100 (under 40x lens)



$1 \times 10^6$  Jurkat cells were stained with 0.5ug MME,CD10 antibody (Catalog No:112695, red) and control antibody (blue). Fixed with 90% MeOH blocked with 3% BSA (30 min). Alexa Fluor 488-conjugated AffiniPure Goat Anti-Rabbit IgG(H+L) with dilution 1:1000.