

# Anti-SERPINB3 / SCCA-1 antibody



Catalog Number: 101695

## Product name

Anti-SERPINB3 / SCCA-1 antibody

## Immunogen

[Human SERPINB3 / SCCA-1 \(His Tag\) recombinant protein](#)

## Specificity

Human SERPINB3 / SCCA-1

## Antibody description

Rabbit polyclonal to SERPINB3 / SCCA-1

## Preparation

Produced in rabbits immunized with purified, recombinant Human SERPINB3 / SCCA-1 (rh SERPINB3 / SCCA-1; AAB20405.1; Asn2-Pro390). SERPINB3 / SCCA-1 specific IgG was purified by Human SERPINB3 / SCCA-1 affinity chromatography.

## Formulation

0.2  $\mu$ m filtered solution in PBS

## Storage

This antibody can be stored at 2°C-8°C for one month without detectable loss of activity. Antibody products are stable for twelve months from date of receipt when stored at -20°C to -80°C.

Preservative-Free.

Sodium azide is recommended to avoid contamination (final concentration 0.05%-0.1%). It is toxic to cells and should be disposed of properly. Avoid repeated freeze-thaw cycles.

## Clonality

Polyclonal

## Ig Type

Rabbit IgG

## Applications

ELISA, WB, IP

## Dilutions

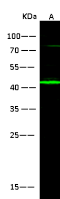
WB: 10-20  $\mu$ g/ml

ELISA: 0.1-0.2  $\mu$ g/mL

This antibody can be used at 0.1-0.2  $\mu$ g/mL with the appropriate secondary reagents to detect Human SERPINB3 / SCCA-1. The detection limit for Human SERPINB3 / SCCA-1 is < 0.039 ng/well.

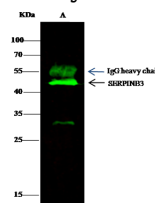
IP: 1-4  $\mu$ g/mg of lysate

## Validations



Lanes	A
Items	
Sample (whole cell lysate)	A431
Sample Volume ( $\mu$ g/lane)	30
Gel	13% SDS-PAGE reducing gel
Recommended Concentration	10-20 $\mu$ g/ml
Secondary Antibody	Dylight 800 labeled Antibody to Rabbit IgG (H+L), at 1:5000 dilution.
Developed using Odyssey imaging system.	
Explanation	Predicted band size : 45 kDa Observed band size : 42 kDa

SERPINB3 / SCCA-1 Antibody, Rabbit PAb, Antigen Affinity Purified, Western blot



Lanes	A
Items	
Sample (whole cell lysate)	A431
Sample quantity	0.5 mg
IP antibody quantity	2 $\mu$ g
Protein G Agarose	15 $\mu$ l of 50% Protein G Agarose
Gel	13% SDS-PAGE reducing gel
Primary antibody	His-SERPINB3 antibody at 10 $\mu$ g/ml
Secondary antibody	Dylight 800-labeled antibody to rabbit IgG (H+L), at 1:5000 dilution

SERPINB3 / SCCA-1 Antibody, Rabbit PAb, Antigen Affinity Purified, Immunoprecipitation