

Anti-IRF1 Rabbit antibody



Catalog Number: 167295

Product name

Anti-IRF1 Rabbit antibody

Specificity

Human, Mouse, Rat

Antibody description

IRF1 Rabbit polyclonal antibody

Preparation

Antigen: Recombinant protein of human IRF1

Formulation

Supplied in 50nM Tris-Glycine(pH 7.4), 0.15M NaCl, 40%Glycerol, 0.01% sodium azide and 0.05% BSA.

Storage

Store at -20°C. Stable for 12 months from date of receipt.

Clonality

Polyclonal

Ig Type

Rabbit IgG

Applications

WB, IHC-P, ICC/IF, FC, IP

Dilutions

WB: 1/1000

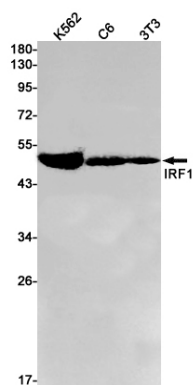
IHC: 1/100

ICC/IF: 1/100

FC: 1/50

IP: 1/20

Validations



Western blot detection of IRF1 in K562,C6,3T3 cell lysates using IRF1 Rabbit pAb(1:1000 diluted).Predicted band size:37kDa.Observed band size:48kDa.