

# Mouse M-CSF/CSF-1 (His Tag) recombinant protein



Catalog Number: 504295

## General Information

### Gene Name Synonym

Processed macrophage colony-stimulating factor 1

### Protein Construction

A DNA sequence encoding the mouse CSF1 (P07141-1) (Met1-Glu262) was expressed with a C-terminal polyhistidine tag.

### Organism

Mouse

### Expression Host

Human Cells

## QC Testing

### Activity

1. Immobilized mouse CSF1-His at 10 µg/ml (100 µl/well) can bind mouse CSF1R-Fch (Cat:504717), The EC<sub>50</sub> of mouse CSF1R-Fch (Cat:504717) is 0.04-0.1 µg/ml.
2. Measured in a cell proliferation assay using M-NFS-60 mouse myelogenous leukemia lymphoblast cells. The ED<sub>50</sub> for this effect is typically 2-10 ng/ml.

### Purity

> 95 % as determined by SDS-PAGE

### Endotoxin

< 1.0 EU per µg of the protein as determined by the LAL method

### Stability

Samples are stable for up to twelve months from date of receipt at -70°C

### Predicted N terminal

Lys 33

### Molecular Mass

The recombinant mouse CSF1 comprises 241 amino acids and has a predicted molecular mass of 27.4 kDa. The apparent molecular mass of the protein is approximately 40-55 kDa in SDS-PAGE under reducing conditions due to glycosylation.

### Formulation

Lyophilized from sterile PBS, pH 7.4.

1. 5 % trehalose and mannitol are added as protectants before lyophilization.
2. Please contact us for any concerns or special requirements.

## Usage Guide

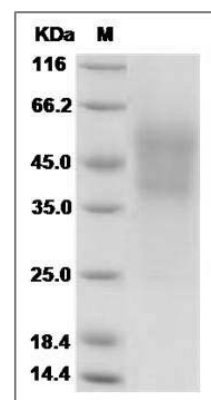
### Storage

Store it under sterile conditions at -20°C to -80°C. It is recommended that the protein be aliquoted for optimal storage. Avoid repeated freeze-thaw cycles.

### Reconstitution

Adding sterile water, prepare a stock solution of 0.25 mg/ml. Concentration is measured by UV-Vis.

### SDS-PAGE



Mouse M-CSF / CSF-1 Protein (His Tag) SDS-PAGE