

Anti-CPM antibody



Catalog Number: 141295

Product name

Anti-CPM antibody

Specificity

Human Carboxypeptidase M / CPM

Antibody description

Rabbit Polyclonal to Human CPM

Preparation

Produced in rabbits immunized with purified, recombinant Human Carboxypeptidase M / CPM . Carboxypeptidase M / CPM specific IgG was purified by Human Carboxypeptidase M / CPM affinity chromatography.

Formulation

0.2 µm filtered solution in PBS

Storage

This antibody can be stored at 2°C-8°C for one month without detectable loss of activity. Antibody products are stable for twelve months from date of receipt when stored at -20°C to -80°C.

Preservative-Free.

Sodium azide is recommended to avoid contamination (final concentration 0.05%-0.1%). It is toxic to cells and should be disposed of properly. Avoid repeated freeze-thaw cycles.

Clonality

Polyclonal

Ig Type

Rabbit IgG

Applications

ELISA, IHC-P

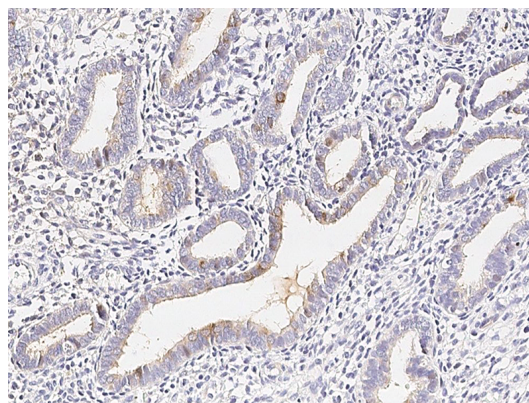
Dilutions

ELISA: 0.1-0.2 µg/ml

This antibody can be used at 0.1-0.2 with the appropriate secondary reagents to detect Human Carboxypeptidase M / CPM.

IHC-P: 0.05-1 µg/mL

Validations



Human Carboxypeptidase M/CPM
Immunohistochemistry(IHC) 14869