

# ECM2 antibody

Catalog Number: 110295

## Product name

ECM2 antibody

IHC: 1:20-1:200

IF: 1:20-1:200

## Specificity

Human, Mouse, Rat; other species not tested.

## Antibody description

ECM2 Rabbit Polyclonal antibody. Positive IHC detected in human ovary tissue. Positive IF detected in L02 cells. Positive WB detected in L02 cells. Observed molecular weight by Western-blot: 48 kDa, 58 kDa, 80 kDa

## Preparation

This antibody was obtained by immunization of ECM2 recombinant protein (Accession Number: XM\_047422899). Purification method: Antigen affinity purified.

## Formulation

PBS with 0.02% sodium azide and 50% glycerol pH 7.3.

## Storage

Store at -20°C. DO NOT ALIQUOT

## Clonality

Polyclonal

## Ig Type

Rabbit IgG

## Applications

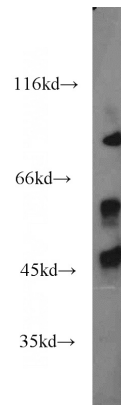
ELISA, WB, IHC, IF

## Dilutions

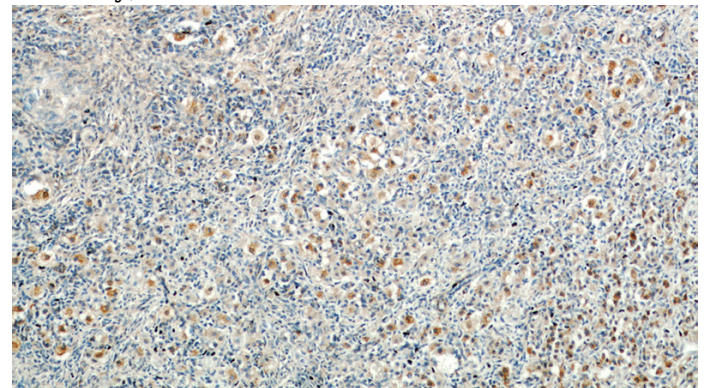
Recommended Dilution:

WB: 1:200-1:1000

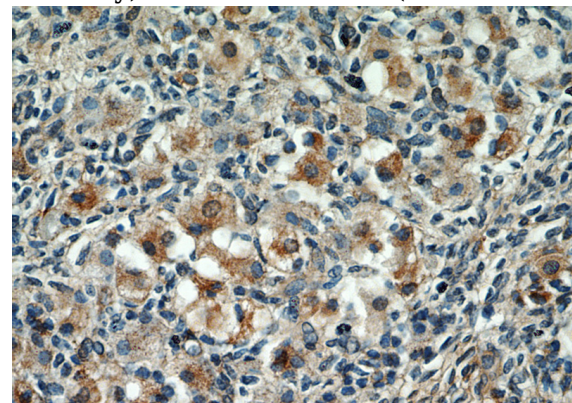
## Validations



L02 cells were subjected to SDS PAGE followed by western blot with Catalog No:110295(ECM2 antibody) at dilution of 1:200



Immunohistochemical of paraffin-embedded human ovary using Catalog No:110295(ECM2 antibody) at dilution of 1:50 (under 10x lens)



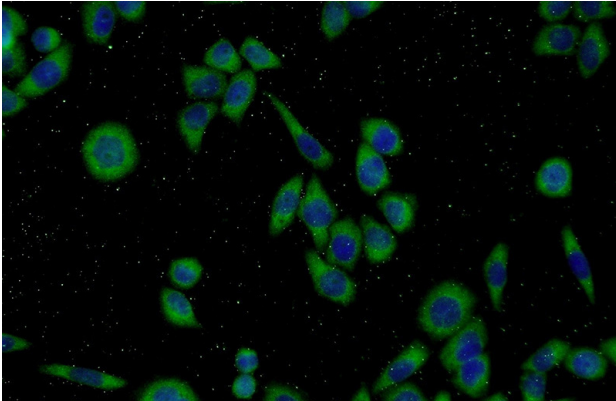
Immunohistochemical of paraffin-embedded human ovary using Catalog No:110295(ECM2 antibody) at dilution of 1:50 (under 10x lens)

# ECM2 antibody

Catalog Number: 110295

---

antibody) at dilution of 1:50 (under 40x lens)



Immunofluorescent analysis of L02 cells using Catalog No:110295(ECM2 Antibody) at dilution of 1:50 and Alexa Fluor 488-conjugated AffiniPure Goat Anti-Rabbit IgG(H+L)